

Health and Care Integration: National, regional and local changes

Isha Coombes, Borough Director (Harrow), NHS North West London
Lisa Henschen, Managing Director, Harrow Borough Based Partnership

1st July Statutory Changes: What changed?

- On 30 June 2022 Clinical Commissioning Groups were abolished
- On 1 July 2022 a number of changes to how the NHS is organised and works in partnership across health and care came into force:
 - Integrated Care Systems were placed on a statutory footing
 - Integrated Care Boards came into being
- This means a new organisation in NW London, new governance boards and new acronyms

Integrated Care System (ICS)

- The NW London ICS covers the eight boroughs of NW London and brings together all health and care organisations working to deliver against the four core national objectives of ICSs.
- The ICS does not have a budget or employ staff.

ICS national objectives

1. Improve outcomes in population health and health care
2. Prevent ill health and tackle inequalities in outcomes, experience and access
3. Enhance productivity and value for money
4. Support broader economic and social development



NW London is:

- Eight local authorities
- Nine NHS Trusts - Four acute trusts, four community mental health trusts, one ambulance trust
- 347 GP Practices
- 45 Primary Care Networks
- 276 care homes
- Over 1,500 voluntary organisations
- 50,000 NHS employees
- Over 2.1 million residents (ONS 2019)

Integrated Care Board (ICB)

- In NW London the ICB is known publicly as NHS NW London.
- This is the statutory NHS organisation responsible for developing a plan for meeting the health needs of the population, managing the NHS budget and arranging for the provision of health services in NW London.
- It holds a budget and employs staff (*those in employment of the CCG on 30 June had their employment transferred to the ICB*).

- The NHS NW London Board meets monthly
- It is chaired by Penny Dash
- Membership is set out on the website <https://www.nwlondonics.nhs.uk/about-nhs-nw-london/board>
- The first meeting of the NHS NW London Board was 8.30am 1 July 2022

Integrated Care Partnership

- This is the statutory committee jointly formed between the NHS Integrated Care Board and all local authorities in North West London.
 - The ICP is responsible for producing the overall strategy on how to meet the health and wellbeing needs of the population in NW London.
 - The ICP also does not have a budget or employ staff.
-
- The NW London Integrated Care Partnership Committee will meet quarterly.
 - It is co-chaired by Penny Dash and a local authority leader or CEO.

Borough Based Partnerships (BBP)

- In NW London these are the eight local partnerships who deliver the strategy.
- These partnerships can include primary care, community care, acute trusts, mental health, local authorities and the voluntary sector.

The Harrow Borough Based Partnership

Borough Based Partnerships will be critical drivers of change in the new system.

The Harrow Borough Based Partnership brings together our NHS organisations, Harrow Council, our GPs, and local Voluntary & Community Sector.

Our mission is to work with children, families and communities in Harrow to support better care and healthier lives.

NHS North West
London

Harrow Council

Harrow's Primary
Care Networks

Central London
Community
Healthcare NHS
Trust

Central and North
West London NHS
Foundation Trust

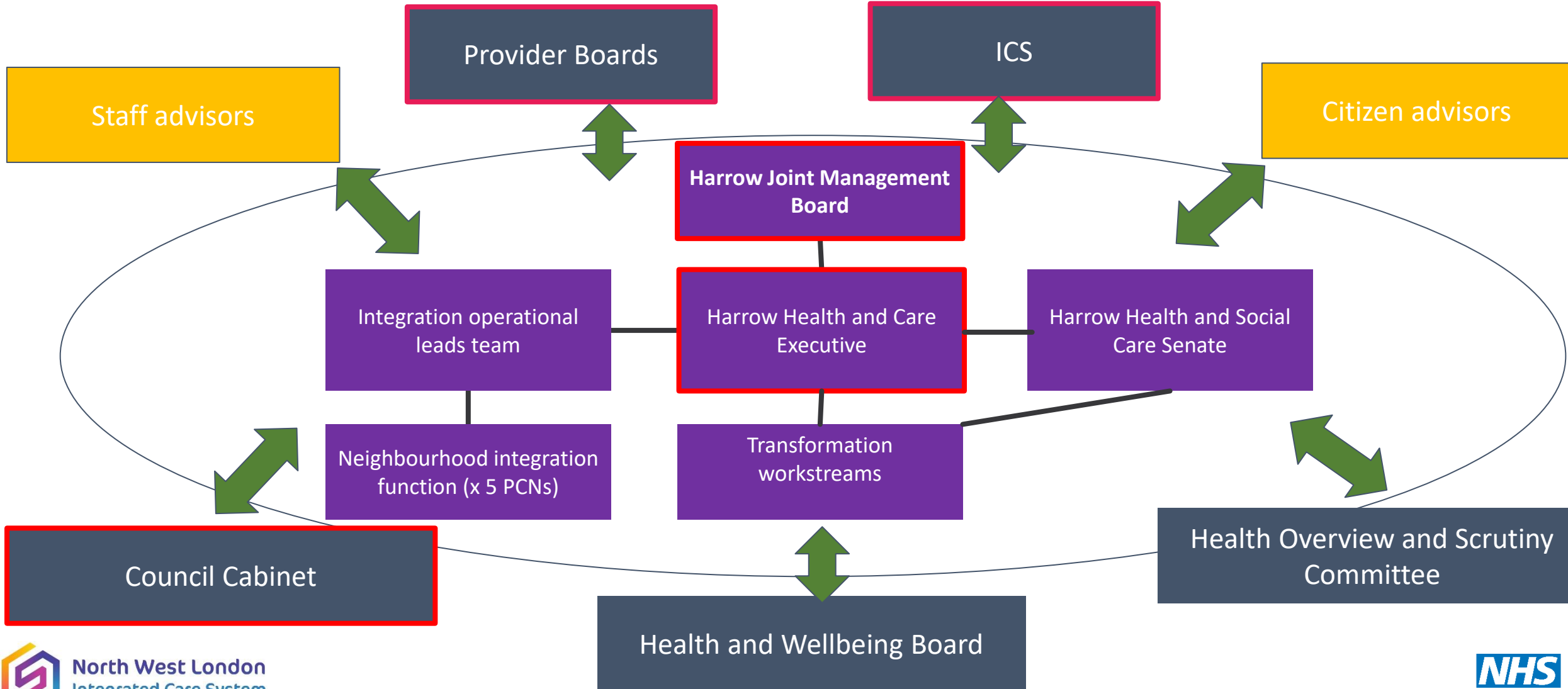
London North West
University NHS
Healthcare

Harrow Together

Harrow Health
Community Interest
Company

St Luke's Hospice

Harrow Borough Based Partnership Governance Structure



Decision-making Structure in the Harrow Borough Based Partnership

Sovereign Organisational Governance and Decision Making

Local Authority

Provider
Boards

ICS

Primary Care
Networks

Harrow
Community
Action

St Luke's
Hospice

Harrow Health
CIC



Agreed level of delegated
responsibility (to be defined in
Terms of Reference)

Harrow Joint Management Board



Agreed level of delegated
responsibility (to be defined in
Terms of Reference)

Harrow Health and Care Executive