

Achieving Excellence Together



The Journey So Far...



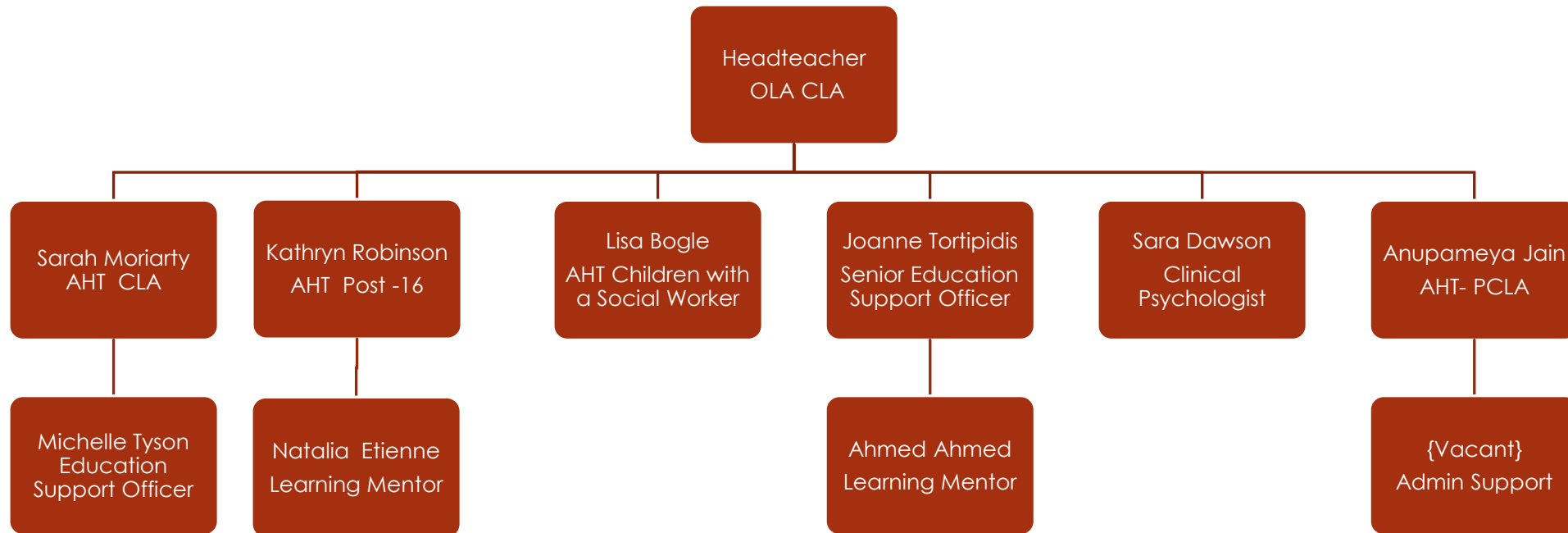
- The Children's Act (1989) was amended in 2014 and required every local authority in England to appoint an officer to make sure that its duty to promote the educational achievement of its looked-after children is properly discharged.
- The Children's Act was amended in 2017 to promote the educational achievement of previously looked-after children.
- Non-statutory guidance was provided in June 2021 to extend the role of the VHT in September 2021, to promote the education for every child with a social worker.

What is a Virtual School?



- Every local authority in England has a Virtual School Headteacher (VSH) who has a role to advocate for CLA and children with a social worker.
- Ensures every vulnerable child reaches their full educational potential.
- Has robust procedures in place to monitor educational progress, attainment and attendance.
- Provides training, support and advice for key stakeholders.

Virtual School Structure



Pupil Premium



- Harrow Virtual School gives £1500, split into termly payments of £500 to schools.
- Schools are accountable for how their Pupil Premium (PP) is spent.
- Top-up pupil premium can be applied for if a child or young person has additional needs.
- The spend is monitored via the child's educational targets in their Personal Education Plan (PEP)

School Overview



- PEP returns remain at 100%.
- 111 pupils of Statutory School Age (SSA) are on roll.
- 70% of students have been in care for 1 year or longer
- 55% of pupils are educated outside of Harrow. They are spread across 23 local authorities.
- 95% of students attend schools which are Ofsted rated as 'Good' or better.
- 23% of students have an EHCP.
- 33% of students have been identified as having social, emotional and mental health challenges

Primary End of Key Stage Predictions



- Key Stage 1: 50% (2/4) are expected to achieve 'expected' in Reading, Writing and Maths. The national average is 52% (Reading), 41% (Writing) and 32% (Maths)
- Key Stage 2: 42% (3/7) are expected to achieve 'expected' in Reading, Writing and Maths. The national average for is 32%.

Our primary aged children continue to meet or exceed national averages for children in care.

Year 11 Exam Predictions



There are currently 19 students in Year 11.

- 42% (8/19) will achieve 8 or more GCSEs at Grade 4 or above.
- 53% (10/19) will achieve 5 or more GCSEs at Grade 4 or above.
- 63% (12/19) will achieve at least 1 GCSE pass

The data above shows performance at Key Stage 4 is improving. More children are expected to receive good GCSEs when compared to the last academic year.

In 2020-2021 only 1 student received 11 GCSEs (grades 4-8) and 4 students achieved GCSE passes in both English and Maths.

Key Stage 5 – Summer Term



KS5 (Years 12 and 13) 73 students:

- 78% (57/73) are EET
- 22% (16/73) NEET
- 95% (54/57) of students that are EET are in education or training; 4% (2/57) of students are in employment

Post-16 Qualification Predictions



- 23 ESOL course passes
- 7 Functional Skills course passes
- 3 GCSE (+1 Year 14 student) predicted to pass
- 3 BTEC Level 2 course passes
- 2 BTEC Level 3 Year 1 passes with progression to Year 2
- 1 Apprenticeship progression for continued employment and training
- 2 AS Level students predicted to pass with progression to A Level
- 2 A Level students predicted to pass with progression to University – AAA and BBB
- 4 BTEC Level 3 course passes with progression to University (2) and employment (2)

Enrichment Offer



- Harrow School KS3-5 Study Club: weekly on Thursdays 4.30-5.30pm & BBQ 1st July 5pm
- Reading Club (online) Years 3-4, 5-6 & 7-9: monthly on Mondays 4.30-5.30pm
- Phoenix outdoor activities i.e. kayaking, raft building Years 10-12: 26th July in Hendon NW9
- Brunel University Urban Scholars residential Years 9-10: 28th - 30th July
- Horsenden Hill Activity Centre football/golf Years 5-6, Years 11+: July dates TBC in Northolt
- Strength in Horses Years 5-9: 1st - 5th August at Edge Stables HA8 8QX
- ESOL Summer School all ages: 1st - 19th August at Capital City Academy in Willesden
- Exscitec STEM residential age 12-14yrs & 15-17yrs: 14th - 26th August in Leicestershire

Autumn 2022:

- Care 2 Dance – weekly on Saturdays
- Arvon Lumb Bank creative writing residential October half-term Years 10-12



Priorities



- To review education packages for ‘hard to reach’ Key Stage 3 and Key 4 students.
- To increase the number of CLA and Care Leavers in Employment, Education and Training to 75% or higher.
- For Key Stage 4 to Key Stage 5 transitions to remain strong.
- School attendance is above 95%.