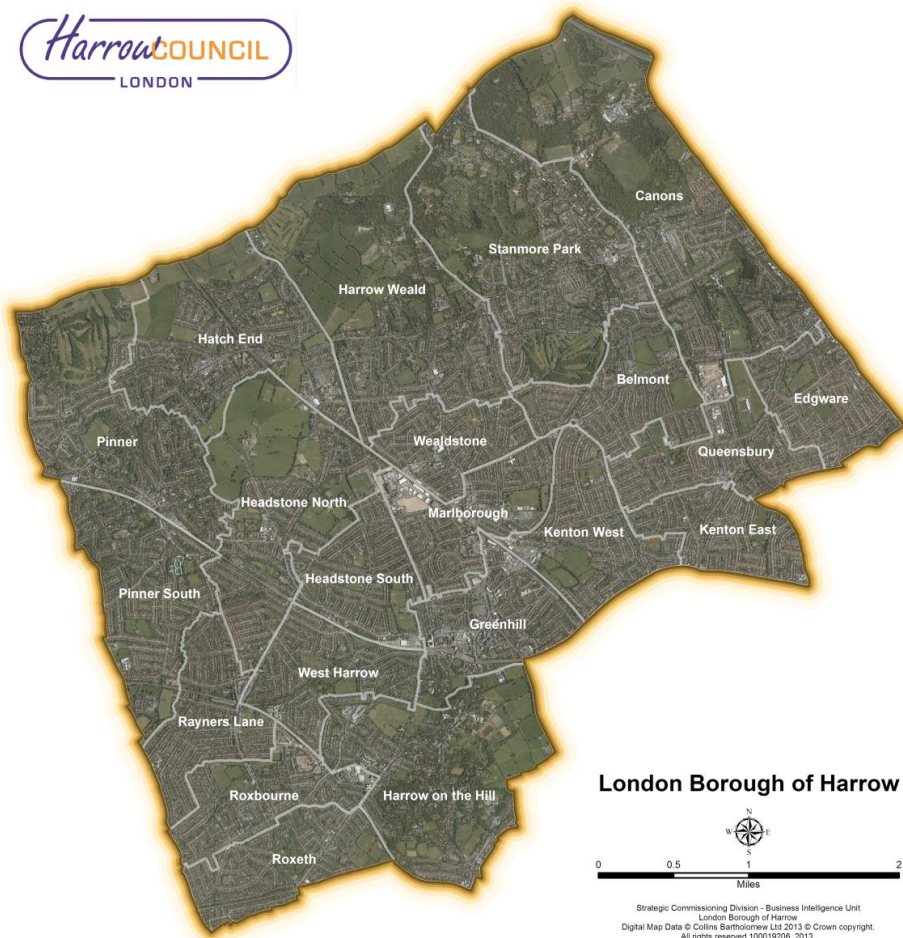


# Annual Crime Report 2015 & 2016

## A Summary of Crime in Harrow



Harrow Council, Station Road, Harrow, HA1 2XY  
Strategic Commissioning Division - Business Intelligence Unit

# Harrow Annual Crime Report 2015 & 2016

<b>Title:</b>	Safer Harrow Annual Crime Report
<b>Purpose:</b>	Planning for Community Safer Strategy
<b>Relevant to:</b>	Safer Harrow Management Group
<b>Authors:</b>	Harrow Council - Business Intelligence Unit
<b>Date Created:</b>	December 2016

## Acknowledgements

- Metropolitan Police – <http://maps.met.police.uk/tables.htm>
  - Data extract: December 2016
- Safe Stats – <https://maps.london.gov.uk/safestats/>
  - Data extract: March 2017



## Copyright

All maps used within this report are reproduced from the Ordnance Survey mapping with permission of the Controller of Her Majesty's Stationery Office © Crown Copyright 100019206. Unauthorised reproduction infringes Crown Copyright and may lead to prosecution or civil proceedings.

## Purpose

Safer Harrow refers to the Community Safety Partnership that was set up following the 1998 Crime and Disorder Act with the aim of promoting a multi-agency approach to reducing crime and anti-social behaviour. Safer Harrow comprises the Police, Harrow Council, the Primary Care Trust, London Probation, London Fire Brigade, Trading Standards and the voluntary sector.

Crime rates were based on ONS Mid-year Population Estimates:

- Harrow: 246,000 (2014), 247,130 (2015)
- Greater London: 8,530,700 (2014), 8,673,713 (2015)

Time periods:

1. October 2014 through September 2015
2. October 2015 through September 2016

# Table of contents

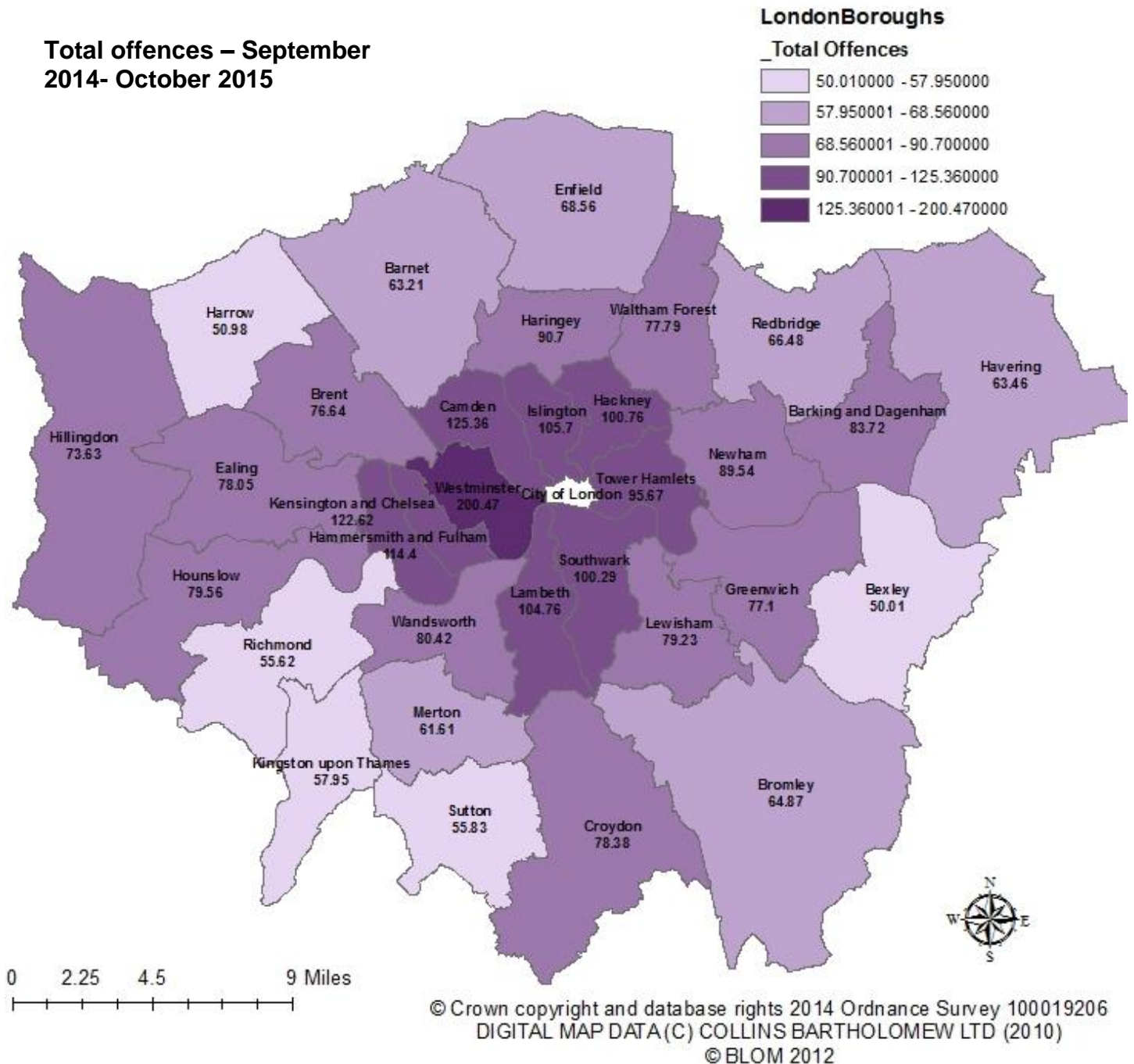
<b>Harrow Annual Crime Report 2015 &amp; 2016 .....</b>	<b>2</b>
<i>Acknowledgements .....</i>	2
<i>Copyright.....</i>	2
<i>Purpose.....</i>	2
<i>Level of total crime in Harrow &amp; Greater London .....</i>	4
<b>Gang Crime and Serious Youth Violence .....</b>	<b>7</b>
Knife Crime w/Injury .....	7
Gang Flagged offences .....	8
<b>MOPAC 7 Crimes in Greater London.....</b>	<b>9</b>
MOPAC 7 Crimes in Greater London .....	11
MOPAC 7 Crimes in Harrow.....	12
MOPAC 1: Violence with Injury .....	13
MOPAC 2: Robbery .....	14
MOPAC 3: Burglary.....	15
MOPAC 4: Theft of a Motor Vehicle .....	16
MOPAC 5: Theft from a Motor Vehicle .....	17
MOPAC 6: Theft from a Person.....	18
MOPAC 7: Criminal Damage.....	19
<b>Emergency Care Data Set.....</b>	<b>20</b>
<b>Anti-Social behaviour .....</b>	<b>21</b>
Anti-Social behaviour incidents- Local.....	21
Anti-Social behaviour incidents- MET .....	22

# Level of total crime in Harrow & Greater London

## Greater London

The total of recorded offences during Period 1 (October 2014 - September 2015), for Greater London, was 727,488. The total of recorded offences during Period 2 (October 2015 - September 2016), for Greater London, was 758,919

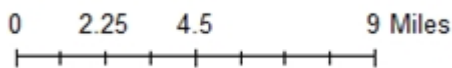
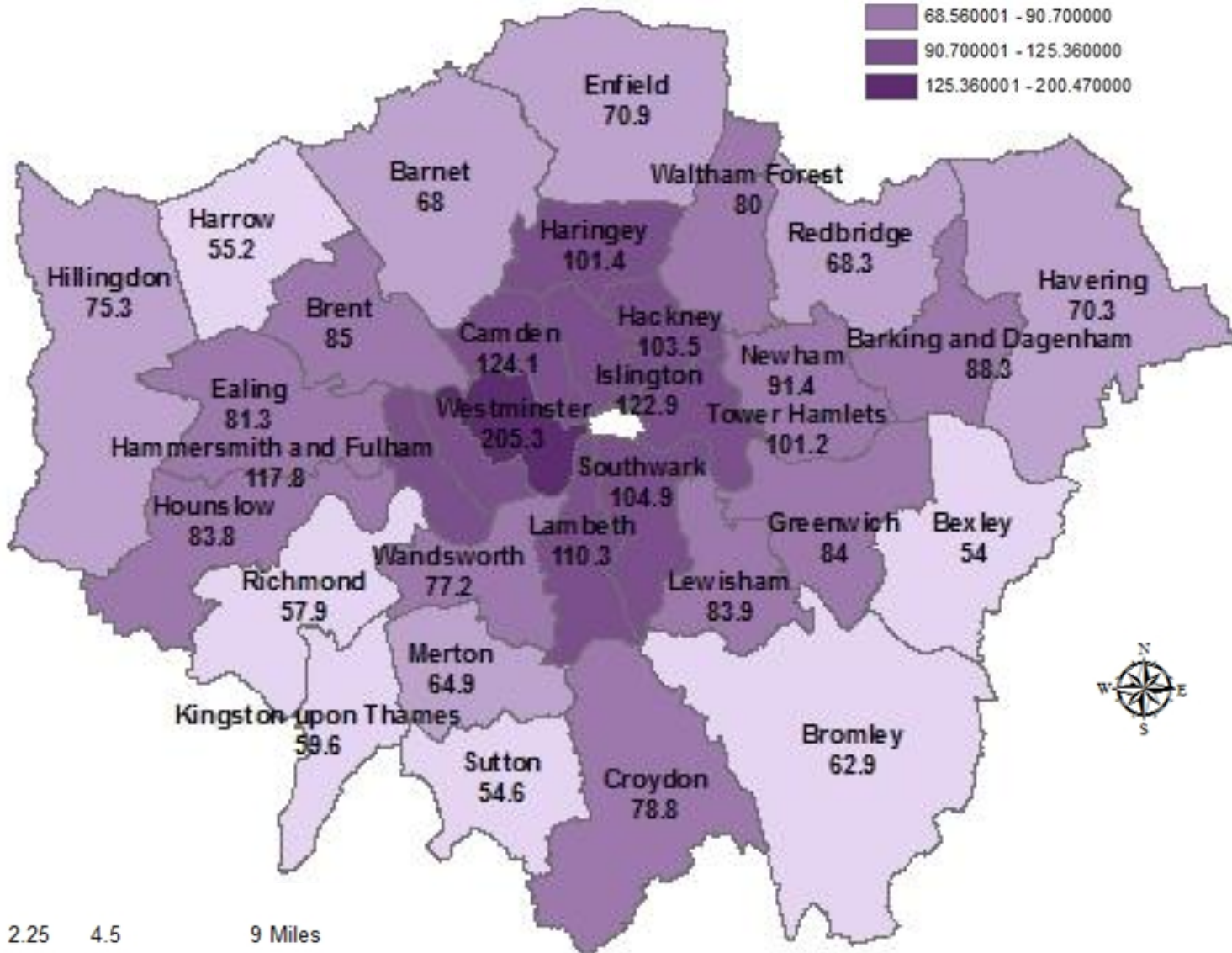
This represents a 4.32% increase or 31,431 more crimes in period 2 over period 1.



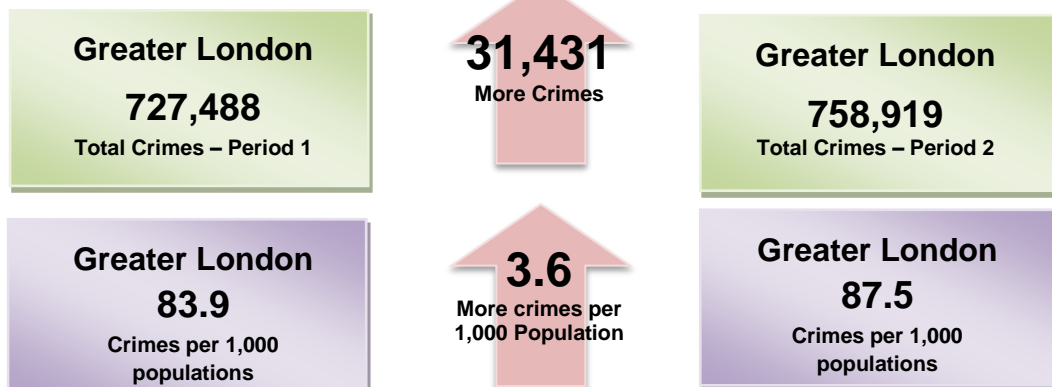
**Total offences – September 2015- October 2016**

**London Boroughs**

**\_Total Offences**



© Crown copyright and database rights 2014 Ordnance Survey 100019206  
 DIGITAL MAP DATA (C) COLLINS BARTHOLOMEW LTD (2010)  
 © BLOM 2012



## Change in the level of crime in Harrow & Greater London

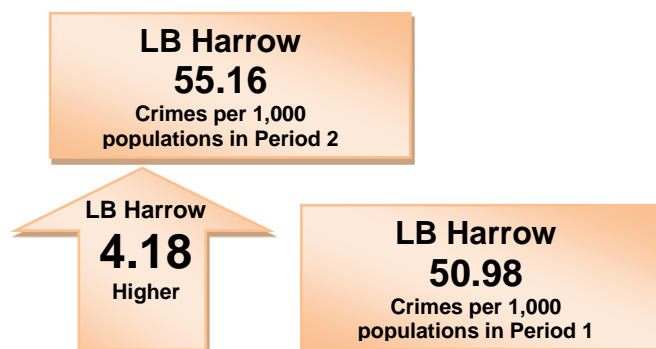
### Harrow

In Harrow, a total of 13,631 crimes were recorded during Period 2, which was 1.79% of all crime reported in Greater London. This was the sixth lowest of actual crimes reported. When this total is divided by Harrow's population the resulting crime rate is 55.2 crimes per 1,000 population. This gives Harrow the third lowest crime rate in London.

The total number of all crimes in Harrow in Period 2 increased by 8.19%, compared to Period 1 (12598 to 13631). This is higher than Greater London's 4.42% increase as a whole.

When comparing with Harrow's neighbouring boroughs; Hillingdon has shown the greatest reduction in the crime rate between the two time periods and Ealing' increase was slightly lower than Harrow's. Barnet showed a similar increase to Harrow and Brent recorded the largest increase in the area.

Total offences	Period 1 - Previous		Period 2 - Current		Offences Change
	Offences	Rate	Offences	Rate	
Hillingdon	21921	73.63	22415	75.29	1.66
Ealing	26775	78.05	27877	81.26	3.21
<b>Harrow</b>	<b>12598</b>	<b>50.98</b>	<b>13631</b>	<b>55.16</b>	<b>4.18</b>
Barnet	24002	63.21	25824	68.01	4.80
Brent	24833	76.64	27540	85.00	8.35
<b>Greater London</b>	<b>727488</b>	<b>83.87</b>	<b>758919.00</b>	<b>87.50</b>	<b>-3.62</b>



Borough	Previous *	Current *	Change *	Borough	Previous *	Current *	Change *
Barking and Dag'	83.72	88.28	4.56	Hounslow	79.56	83.77	4.21
Barnet	63.21	68.01	4.80	Islington	105.70	122.89	17.20
Bexley	50.01	53.97	3.96	Kens' and Chelsea	122.62	129.67	7.04
Brent	76.64	85.00	8.35	Kings' upon Thames	57.95	59.60	1.65
Bromley	64.87	62.91	-1.96	Lambeth	104.76	110.25	5.48
Camden	125.36	124.11	-1.25	Lewisham	79.23	83.88	4.65
Croydon	78.38	78.83	0.45	Merton	61.61	64.88	3.27
Ealing	78.05	81.26	3.21	Newham	89.54	91.40	1.86
Enfield	68.56	70.88	2.32	Redbridge	66.48	68.35	1.87
Greenwich	77.10	83.98	6.88	Rich' upon Thames	55.62	57.92	2.31
Hackney	100.76	103.49	2.73	Southwark	100.29	104.91	4.62
Ham and Fulham	114.40	117.85	3.45	Sutton	55.83	54.61	-1.23
Haringey	90.70	101.38	10.68	Tower Hamlets	95.67	101.23	5.57
<b>Harrow</b>	<b>50.98</b>	<b>55.16</b>	<b>4.18</b>	Waltham Forest	77.79	80.04	2.25
Havering	63.46	70.35	6.89	Wandsworth	80.42	77.21	-3.21
Hillingdon	73.63	75.29	1.66	Westminster	200.47	205.34	4.87

\* Previous - Crime rates based on offences from October 2014 - September 2015 with ONS Mid-Year Estimates from 2014 & 2015.

\* Current - Crime rates based on offences from October 2015 - September 2016 with ONS Mid-Year Estimates from 2015.

\* Change - The percentage change based on the two time periods.

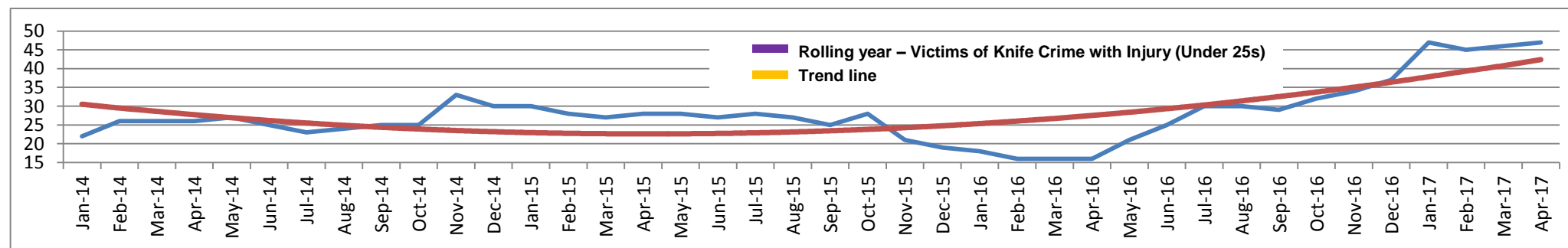
# Gang Crime and Serious Youth Violence

## Knife Crime w/Injury

This includes victims of knife injury aged between 1-24 years not flagged as Domestic Abuse. There was a total of 47 under 25s victims of knife crime injury in 2016/17. This translates to a 0.13 rate increase or 31 additional victims from 2015/16. Both Barnet and Ealing have seen a decrease in victims both over last 4 years and the recent year. Brent and Harrow have seen significant increases over these periods.

	Rolling year April 2014		Rolling year April 2015		Rolling year April 2016		Rolling year April 2017		(over 4 years) Actual Change	(over 4 years) Rate change	(over last year) Actual Change	(over last year) Rate change
<b>Barnet</b>	42	0.11	34	0.09	67	0.18	37	0.10	-5	-0.01	-30	-0.08
<b>Brent</b>	40	0.12	60	0.19	55	0.17	92	0.28	52	0.16	37	0.11
<b>Ealing</b>	65	0.19	78	0.23	67	0.195	61	0.18	-4	-0.01	-6	-0.02
<b>Harrow</b>	26	0.11	28	0.11	16	0.06	47	0.19	21	0.08	31	0.13
<b>Hillingdon</b>	28	0.10	30	0.10	32	0.11	47	0.16	19	0.06	15	0.05

The graph shows from January 2014- April 2017 that there is an upward trend in under 25 year old victims of knife crime with injury. In January 2014 the trend began by decreasing but then started to increase from June 2015 with a sharper increase from October 2016.



Source: MOPAC Gangs Dashboard April 20

## Gang Flagged offences

This includes any crime or crime-related incident where any individual believes that there is a link to the activities of a gang or gangs.

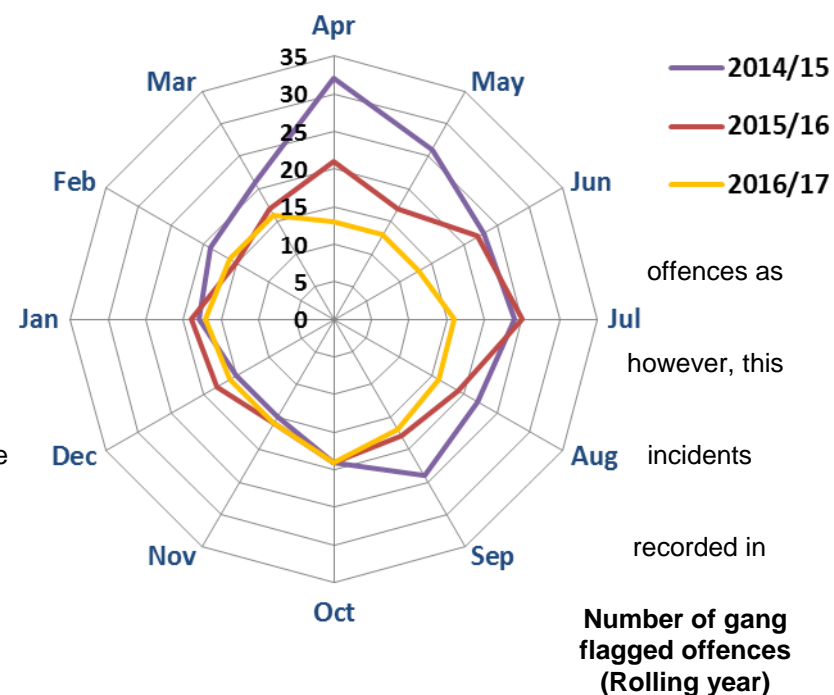
The chart below shows that since 2014/15 the number of gang flagged offences has fallen significantly. There has been a downward trend in gang flagged offences in Harrow, with a total of 17 in 2016/17. This translates to a 0.6 rate decrease or 15 fewer incidents since 2014.

The data does not correspond with local experience so may reflect a change in the tendency to flag gang related

In 2014 Brent had the highest amount of offences, reducing significantly to 39 in 2016. Over the last year has increased to 53.

Barnet has experienced the most significant upward trend of Harrow's nearest neighbours – with 38 more recorded in 2017 than in 2014.

Over the last four years Ealing has sustained a downward trend in offences, with 38 fewer incidents 2017 than in 2014 and 4 fewer incidents since 2016.



	Rolling year April 2014	Rate	Rolling year April 2015	Rate	Rolling year April 2016	Rate	Rolling year April 2017	Rate	(over 4 years) Actual Change	(over 4 years) Rate change	(over last year) Actual Change	(over last year) Rate change
<b>Barnet</b>	22	0.06	54	0.14	20	0.05	58	0.15	36	0.09	38	0.10
<b>Brent</b>	71	0.22	44	0.14	39	0.12	53	0.16	-18	-0.06	14	0.04
<b>Ealing</b>	30	0.09	42	0.17	18	0.07	14	0.04	-16	-0.05	-4	-0.03
<b>Harrow</b>	32	0.13	21	0.08	13	0.05	17	0.07	-15	-0.06	4	0.02
<b>Hillingdon</b>	N/a	N/a	N/a	N/a	N/a	N/a	N/a	N/a	N/a	N/a	N/a	N/a

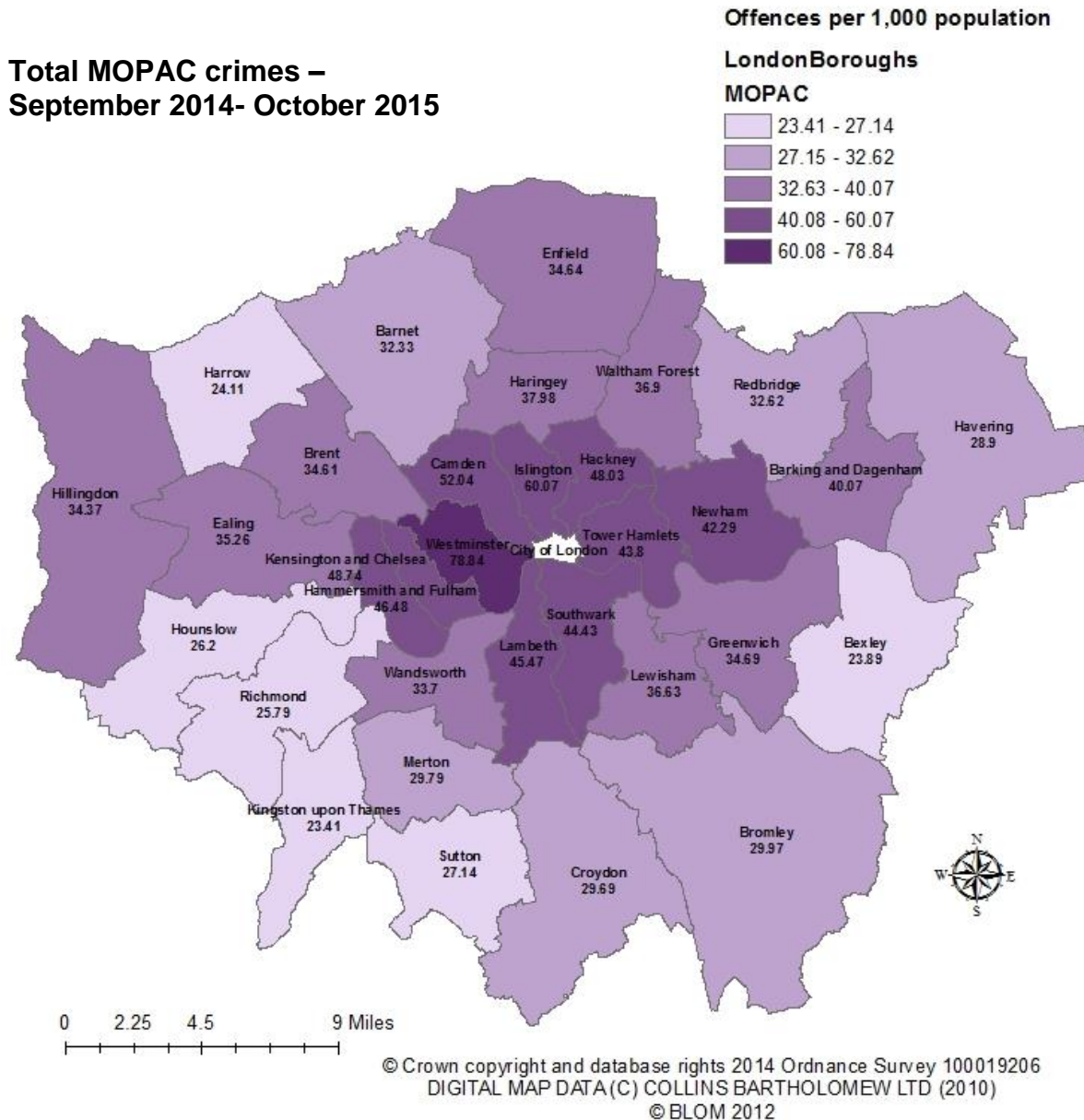
Source: MOPAC Gangs Dashboard April 2017



## MOPAC 7 Crimes in Greater London

There were 406,797 MOPAC offences reported throughout Greater London during Period 2 (October 2015 - September 2016) giving a rate of 46.9 crimes per 1,000 population. This was an increase of 2.5% from the 335,482 MOPAC 7 crimes committed during time Period 1 (October 2014 through September 2015) at a rate of 38.68 crimes per 1,000 population.

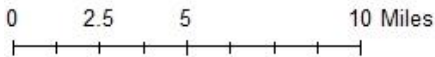
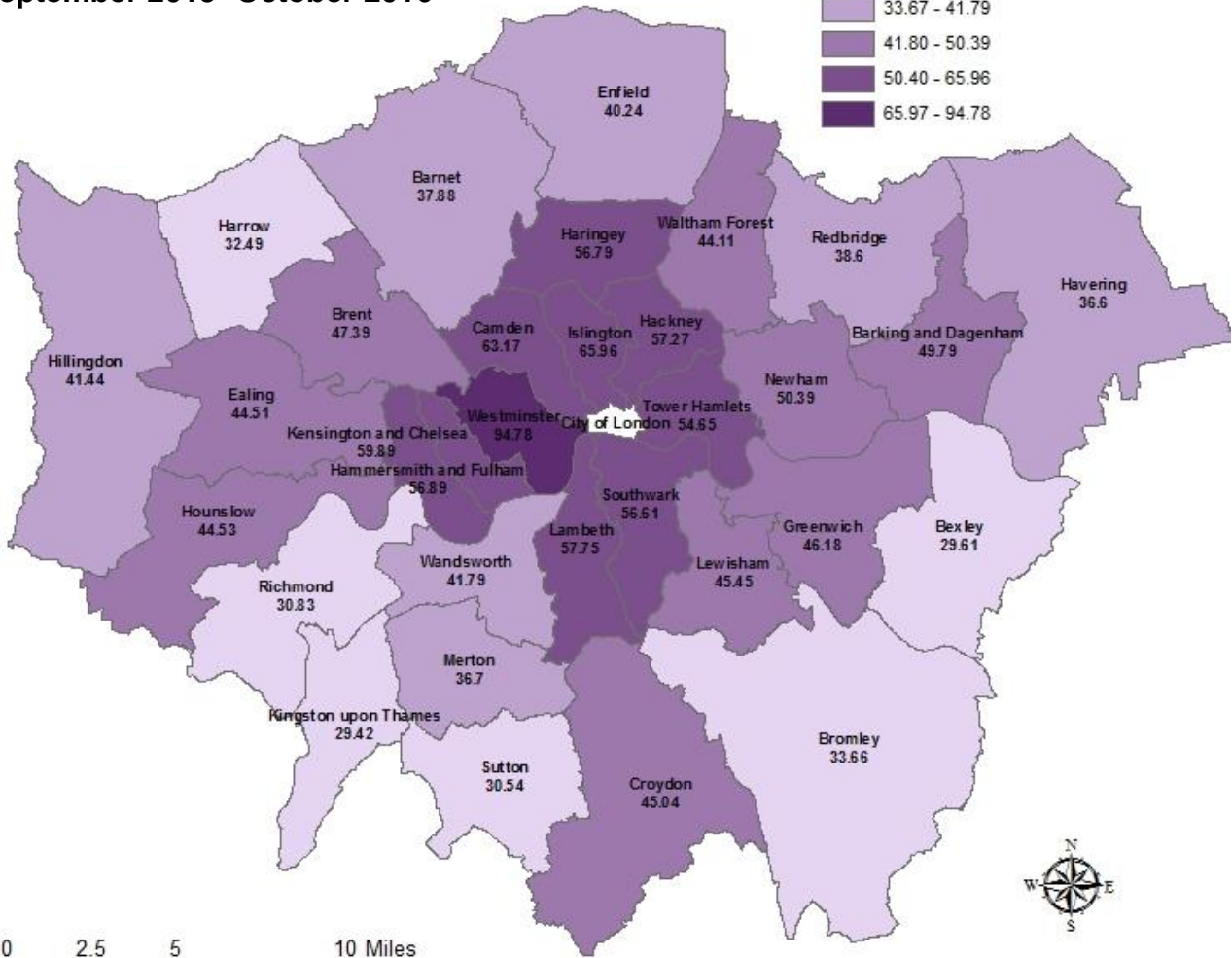
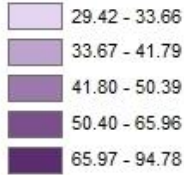
In Harrow, a total of 6,697 MOPAC crimes were recorded during Period 2, which was 2% of all MOPAC 7 crimes reported in Greater London. This was the sixth lowest number of crimes reported giving Harrow a rate of 27.10 MOPAC crimes per 1,000 population. Harrow had the sixth lowest MOPAC 7 recorded crime rate, with Barnet Kingston upon Thames, Bexley, Sutton and Richmond upon Thames all being above Harrow.



**Total MOPAC crimes –  
September 2015- October 2016**

**Crime rate values**

**London Boroughs**



© Crown copyright and database rights 2014 Ordnance Survey 100019206  
DIGITAL MAP DATA (C) COLLINS BARTHOLOMEW LTD (2010)  
© BLOM 2012

**Greater London**  
**38.68**  
MOPAC Crimes per 1,000  
populations in Period 1

Greater  
London  
**8.22**  
higher

**Greater London**  
**46.9**  
MOPAC Crimes per 1,000  
populations in Period 2

**LB Harrow**  
**24.11**  
MOPAC Crimes per 1,000  
populations in Period 1

LB Harrow  
higher  
**2.99**

**LB Harrow**  
**27.10**  
MOPAC Crimes per 1,000  
populations in Period 2

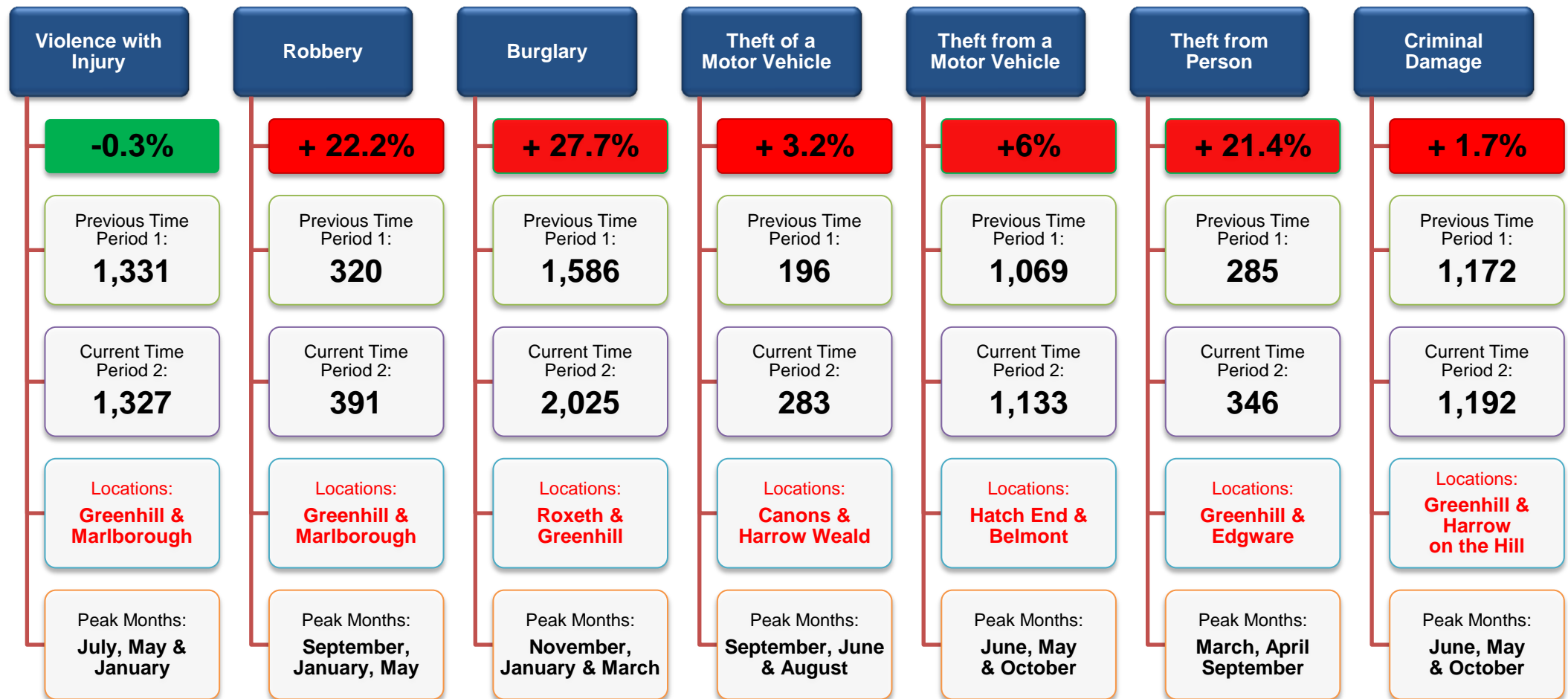
**MOPAC 7 Crimes in Greater London** Below are the MOPAC 7 Crime totals and rates per 1,000 pop from the latest 12 month period (October 2015 to September 2016).

Borough	Violence with Injury		Robbery		Burglary		Theft of Motor Vehicle		Theft from a Motor Vehicle		Theft from Person		Criminal Damage	
	Figures	Rate	Figures	Rate	Figures	Rate	Figures	Rate	Figures	Rate	Figures	Rate	Figures	Rate
Barking and Dagenham	2139	10.59	587	2.91	1413	7.00	868	4.30	1025	5.07	353	1.75	2004	9.92
Barnet	2226	5.86	478	1.26	3707	9.76	832	2.19	2323	6.12	667	1.76	2244	5.91
Bexley	1494	6.17	198	0.82	1055	4.36	570	2.35	919	3.80	164	0.68	1646	6.80
Brent	3042	9.39	975	3.01	2747	8.48	827	2.55	1965	6.06	729	2.25	2247	6.93
Bromley	2014	6.20	339	1.04	2340	7.20	733	2.26	1390	4.28	308	0.95	2179	6.71
Camden	2378	9.86	865	3.59	2697	11.19	849	3.52	1563	6.48	2614	10.84	1954	8.11
Croydon	3475	9.17	1106	2.92	2755	7.27	1077	2.84	1895	5.00	587	1.55	3253	8.58
Ealing	2935	8.56	667	1.94	2542	7.41	838	2.44	2114	6.16	624	1.82	2633	7.68
Enfield	2377	7.24	861	2.62	2715	8.27	704	2.14	1905	5.80	534	1.63	2097	6.38
Greenwich	2761	10.05	500	1.82	1754	6.38	858	3.12	1384	5.04	559	2.03	2500	9.10
Hackney	2723	10.12	1028	3.82	2816	10.47	641	2.38	1531	5.69	2485	9.24	1984	7.38
Hammersmith & Fulham	1759	9.80	368	2.05	1605	8.95	829	4.62	1770	9.87	722	4.02	1437	8.01
Haringey	2922	10.71	1209	4.43	2441	8.95	898	3.29	1807	6.62	1775	6.51	2246	8.23
Harrow	1327	5.37	391	1.58	2025	8.19	283	1.15	1133	4.58	346	1.40	1192	4.82
Havering	1984	7.97	308	1.24	1940	7.79	793	3.18	1004	4.03	392	1.57	1827	7.33
Hillingdon	2492	8.37	393	1.32	2064	6.93	701	2.35	1706	5.73	447	1.50	2472	8.30
Hounslow	2357	8.77	383	1.43	1817	6.76	758	2.82	1914	7.12	444	1.65	2255	8.39
Islington	2443	10.73	923	4.05	2167	9.52	703	3.09	1398	6.14	3344	14.69	2010	8.83
Kensington & Chelsea	1246	7.90	485	3.08	1506	9.55	875	5.55	1678	10.64	1234	7.82	1073	6.80
Kingston upon Thames	1121	6.46	132	0.76	872	5.03	242	1.39	464	2.67	404	2.33	1060	6.11
Lambeth	3732	11.50	1141	3.52	3010	9.28	961	2.96	2144	6.61	2092	6.45	2791	8.60
Lewisham	2852	9.59	837	2.82	2130	7.16	889	2.99	1407	4.73	588	1.98	2365	7.95
Merton	1433	7.01	267	1.31	1512	7.39	567	2.77	957	4.68	241	1.18	1411	6.90
Newham	3312	9.95	1295	3.89	2123	6.38	969	2.91	2463	7.40	1369	4.11	2478	7.45
Redbridge	2051	6.91	589	1.98	1952	6.58	952	3.21	1738	5.86	546	1.84	1748	5.89
Richmond upon Thames	930	4.78	125	0.64	1292	6.63	472	2.42	1001	5.14	210	1.08	1154	5.93
Southwark	3275	10.60	1239	4.01	2925	9.47	1039	3.36	1920	6.22	1724	5.58	2678	8.67
Sutton	1254	6.27	158	0.79	1216	6.08	332	1.66	751	3.75	145	0.72	1287	6.43
Tower Hamlets	2933	9.93	1183	4.01	2700	9.15	1163	3.94	1539	5.21	1606	5.44	2353	7.97
Waltham Forest	2466	9.09	583	2.15	1970	7.26	678	2.50	1518	5.60	648	2.39	2034	7.50
Wandsworth	2162	6.87	597	1.90	2444	7.77	1173	3.73	2122	6.75	703	2.23	1860	5.91
Westminster	3339	13.78	1770	7.31	3192	13.17	985	4.07	2166	8.94	5919	24.43	2182	9.01
<b>Greater London Totals:</b>	<b>140268</b>	<b>16.17</b>	<b>21984</b>	<b>2.53</b>	<b>69456</b>	<b>8.01</b>	<b>25090</b>	<b>2.89</b>	<b>50680</b>	<b>5.84</b>	<b>34590</b>	<b>3.99</b>	<b>64729</b>	<b>7.46</b>
Upper Quartile		6.91		1.32		6.89		2.37		4.93		1.57		6.64
Median		8.93		2.02		7.59		2.83		5.77		2.01		7.42
Lower Quartile		9.94		3.54		9.00		3.23		6.51		5.48		8.25

## MOPAC 7 Crimes in Harrow

October 2015 to September 2016

All figures stated below were taken from the MET Police website that was available at the end of December 2016. (+/- Percentage change of **actual** recorded crimes)



## MOPAC 1: Violence with Injury

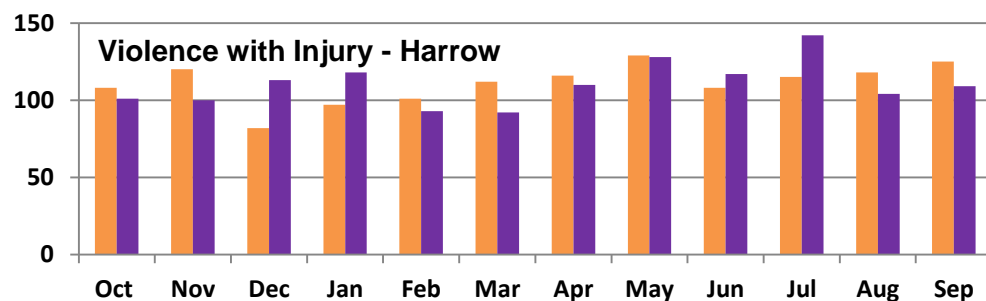
This includes a range of offences such as Murder, Wounding / GBH and Assault with Injury.



There were a total number of 1,327 offences during Period 2, which is a slight decrease from the Period 1. This translates to a 0.02 rate reduction or -4 offences in Period 2. The chart below also shows the number of offences in boroughs around Harrow and in Greater London.

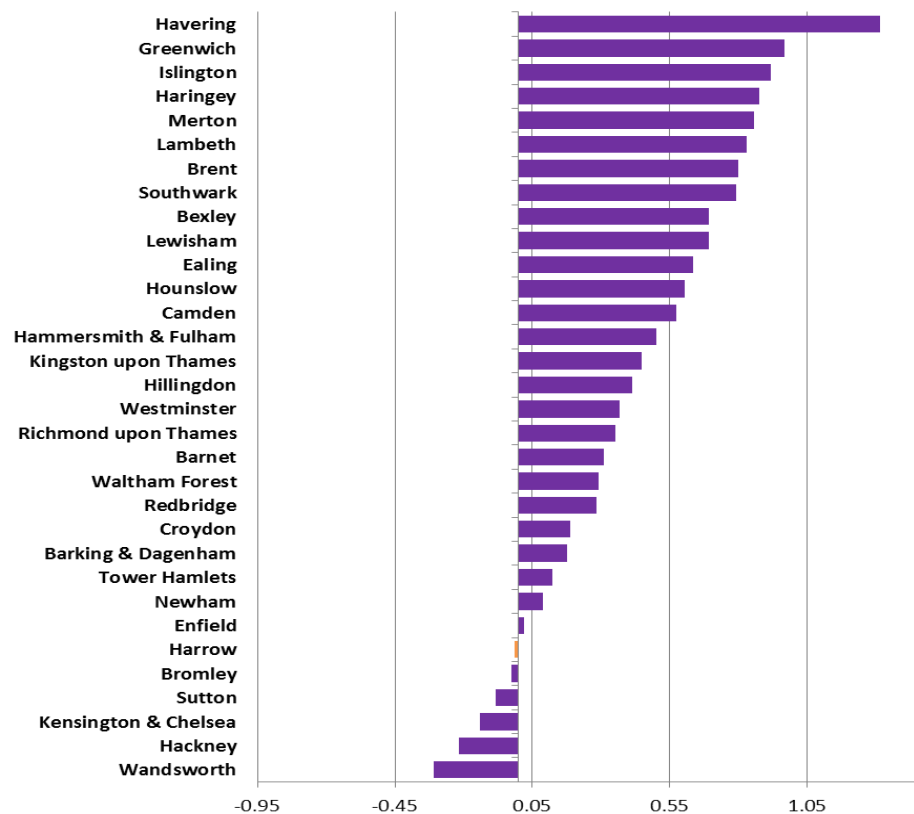
Violence with Injury	Period 1 - Previous		Period 2 - Current		Offences Change	Rate Change
	Offences	Rate	Offences	Rate		
<b>Harrow</b>	<b>1331</b>	<b>5.39</b>	<b>1327</b>	<b>5.37</b>	<b>-4</b>	<b>-0.02</b>
Barnet	2108	5.55	2226	5.86	118	0.31
Brent	3042	9.39	3042	9.39	0	0.00
Ealing	2717	7.92	2935	8.56	218	0.64
Hillingdon	2369	7.96	2492	8.37	123	0.41
<b>Greater London</b>	<b>116162</b>	<b>13.39</b>	<b>140268</b>	<b>16.17</b>	<b>24106</b>	<b>2.78</b>

The chart below shows the number of offences recorded in Harrow during each month for Period 1 in orange and Period 2 in purple.



The following chart shows the change in crime from Period 1 and Period 2 by each London Borough. Harrow has recorded small decrease in violence with injury between Periods 1 and 2. Less than a fifth of boroughs recorded a decrease.

Violence with injury - Rate change Period 1 – 2



## MOPAC 2: Robbery

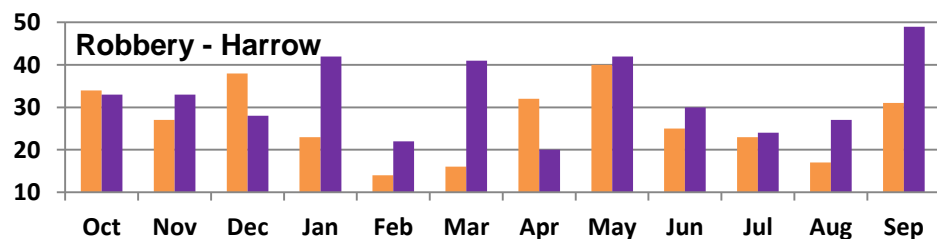
This includes crimes such as theft with the use of force or a threat of force. Personal robberies, commercial robberies and snatch are also included.



There was a total of 391 offences during Period 2, which is an increase from Period 1. This translates to a 0.29 rate increase or 71 additional offences in Period 2. The chart below also shows the number of offences in neighbouring boroughs and in Greater London.

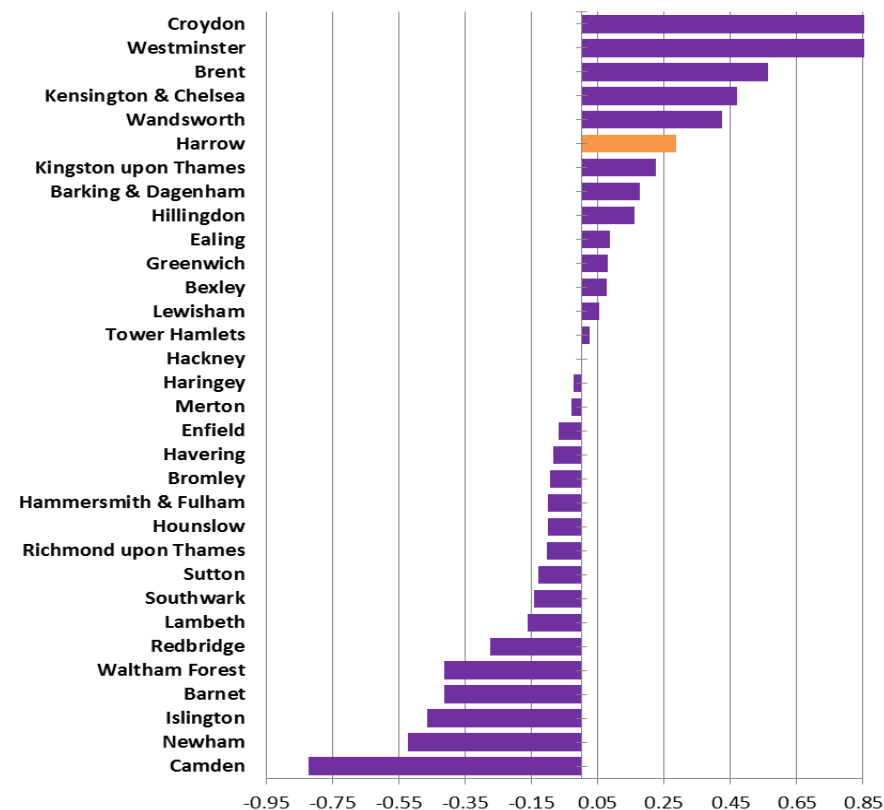
Robbery	Period 1 - Previous		Period 2 - Current		Offences Change	Rate Change
	Offences	Rate	Offences	Rate		
Ealing	637	1.86	589	1.98	-48	-0.12
Barnet	635	1.67	478	1.26	-157	-0.41
Hillingdon	345	1.16	393	1.32	48	0.16
<b>Harrow</b>	<b>320</b>	<b>1.29</b>	<b>391</b>	<b>1.58</b>	<b>71</b>	<b>0.29</b>
Brent	792	2.44	975	3.01	183	0.57
Greater London	18623	2.15	21984	2.53	3361	0.39

The chart below shows in purple the number of offences recorded in Harrow during each month for Period 1 in orange and Period 2.



The following chart shows the change in robbery from Period 1 and Period 2 by each London Borough. Harrow has recorded an increase. Slightly fewer than half of boroughs saw a decrease in robbery between Periods 1 and 2.

Robbery - rate change Period 1 – 2



## MOPAC 3: Burglary

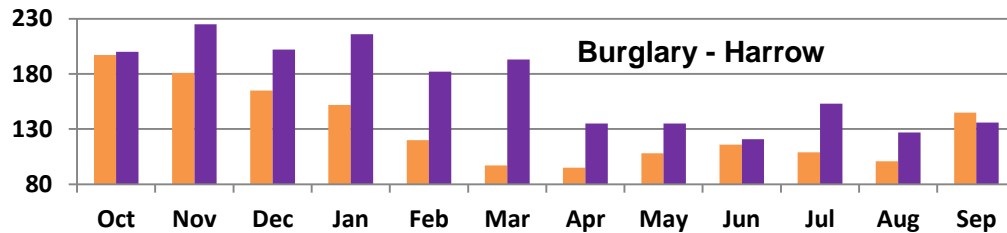
This includes the theft, or attempted theft, from a residential or commercial building/premises where access is not authorised. Damage to a building/premises that appears to have been caused by a person attempting to enter to commit a burglary, is also counted as burglary.



There was a total of 2,025 offences during Period 2, which is a significant increase from Period 1. This translates to a 1.78 rate increase or 489 additional offences in Period 2. The chart below also shows the number of offences in boroughs around Harrow and in Greater London.

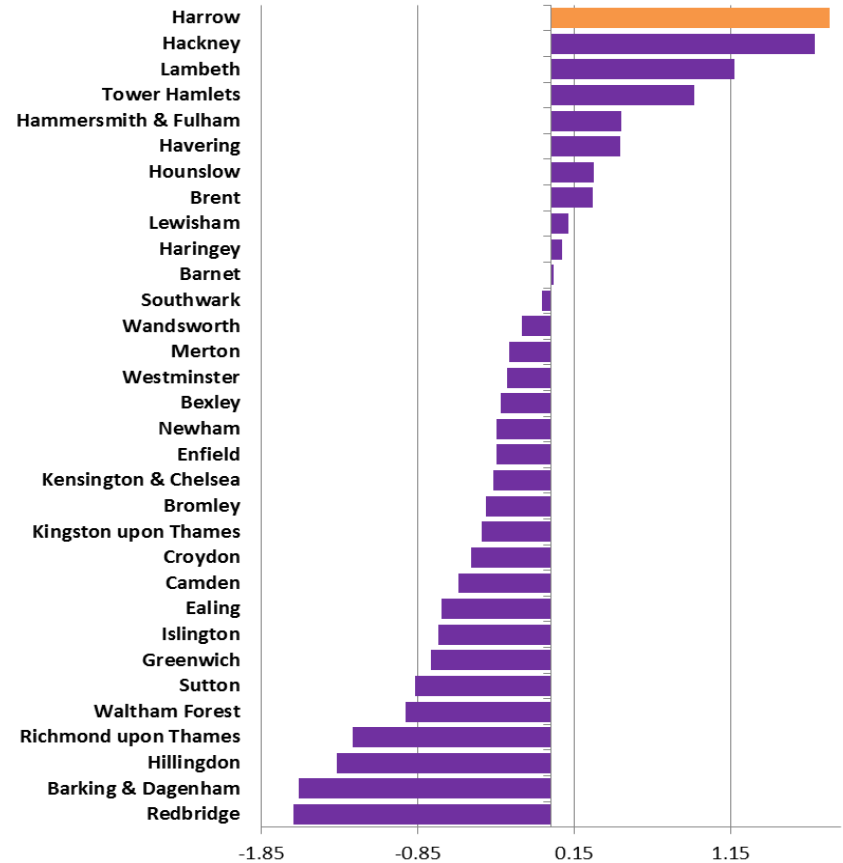
Burglary	Period 1 - Previous		Period 2 - Current		Offences Change	Rate Change
	Offences	Rate	Offences	Rate		
Ealing	2782	8.11	2542	7.41	-240	-0.70
Hillingdon	2471	8.30	2064	6.93	-407	-1.37
Barnet	3700	9.74	3707	9.76	7	0.02
Brent	2660	8.21	2747	8.48	87	0.27
<b>Harrow</b>	<b>1586</b>	<b>6.42</b>	<b>2025</b>	<b>8.19</b>	<b>439</b>	<b>1.78</b>
<b>Greater London</b>	<b>58768</b>	<b>6.78</b>	<b>69456</b>	<b>8.01</b>	<b>10688</b>	<b>1.23</b>

The chart below shows the number of offences recorded in Harrow during each month for Period 1 in orange and Period 2 in purple.



The following chart shows the change in crime from Period 1 and Period 2 by each London Borough. The burglary rates in over half of London boroughs have shown a decrease. Harrow experienced the largest rate increase when compared with the rest of Greater London.

Burglary rate change Period 1 – 2



## MOPAC 4: Theft of a Motor Vehicle

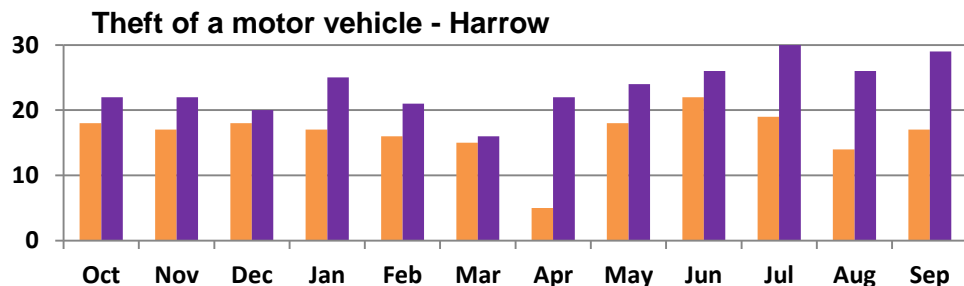
This includes the theft / taking of a motor vehicle or a similar type of motor vehicle.

**0.35**  
Increase

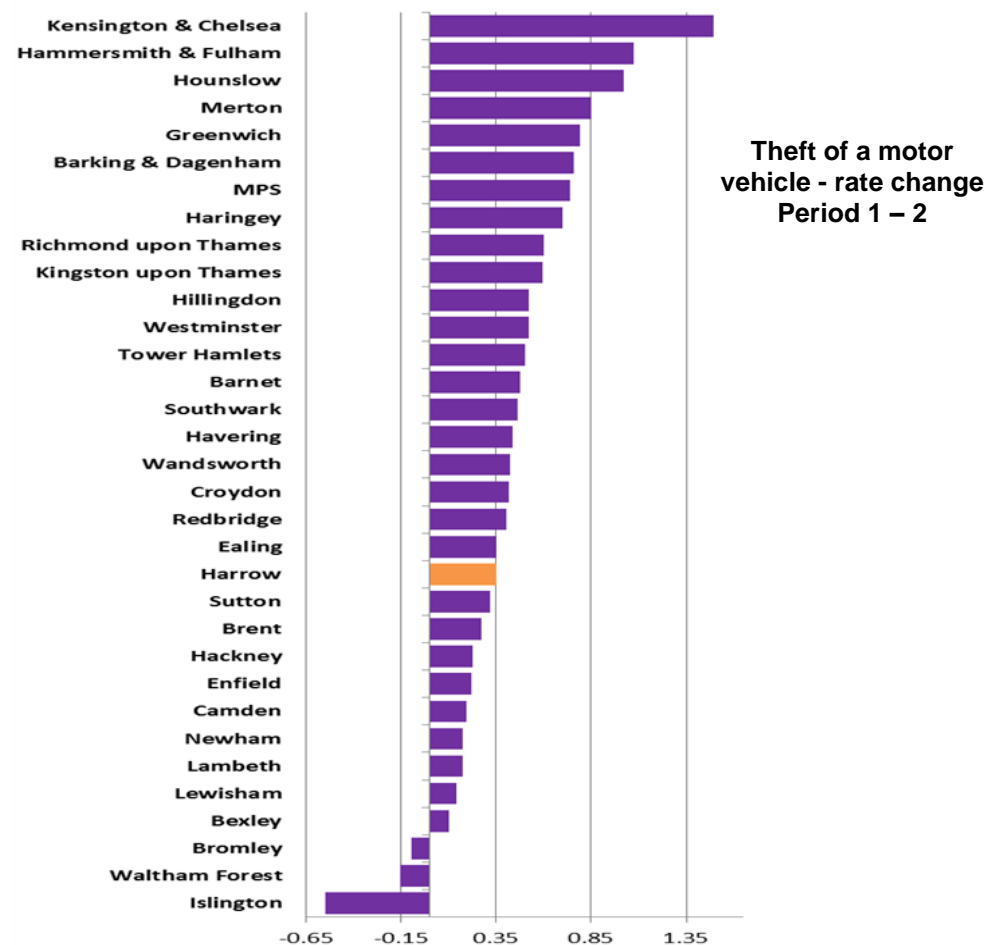
There was a total of 283 offences during Period 2, which is up from the previous Period. This translates to a 0.35 rate increase or 87 additional offences in Period 2. The chart below also shows the number of offences in boroughs around Harrow and in Greater London.

Theft of a motor vehicle	Period 1 - Previous		Period 2 - Current		Offences Change	Rate Change
	Offences	Rate	Offences	Rate		
Hillingdon	546	1.83	701	2.35	155	0.52
Barnet	651	1.71	832	2.19	181	0.48
<b>Harrow</b>	<b>196</b>	<b>0.79</b>	<b>283</b>	<b>1.15</b>	<b>87</b>	<b>0.35</b>
Ealing	717	2.09	838	2.44	121	0.35
Brent	739	2.28	827	2.55	88	0.27
<b>Greater London</b>	<b>18677</b>	<b>2.15</b>	<b>25090</b>	<b>2.89</b>	<b>6413</b>	<b>0.74</b>

The chart below shows the number of offences recorded in Harrow during each month for Period 1 in orange and Period 2 in purple.



The following chart shows the change in crime from Period 1 and Period 2 by each London Borough. Harrow has shown a small increase in the rate of theft of a motor vehicle within Greater London. There is an upward trend across London as nearly all London Boroughs also experienced an increase.





## MOPAC 5: Theft from a Motor Vehicle

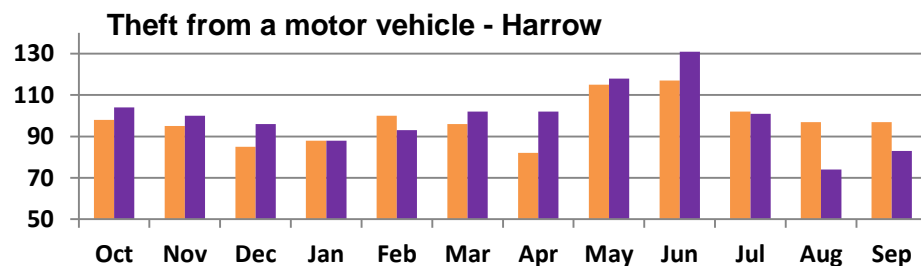
This includes theft of an item or object from a Motor Vehicle.



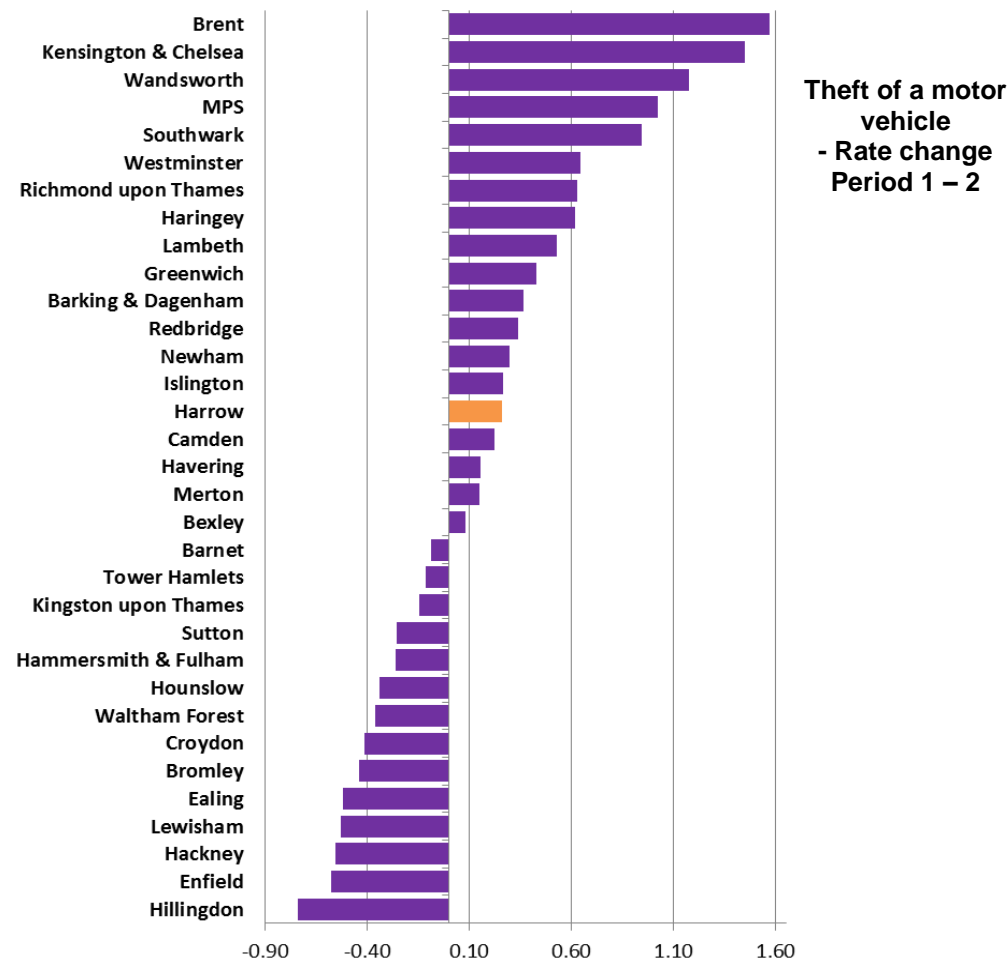
There was a total of 1,192 offences during Period 2, which is an increase from Period 1. This translates to a 0.08 rate increase or 20 additional offences in Period 2. The chart below also shows the number of offences in boroughs around Harrow and in Greater London.

Theft from a Motor Vehicle	Period 1 - Previous		Period 2 - Current		Offences Change	Rate Change
	Offences	Rate	Offences	Rate		
<b>Harrow</b>	<b>1,172</b>	<b>4.74</b>	<b>1,192</b>	<b>4.82</b>	<b>20</b>	<b>0.08</b>
Barnet	2,202	5.80	2,244	5.91	42	0.11
Brent	2,109	6.51	2,247	6.93	138	0.43
Ealing	2,402	7.00	2,633	7.68	231	0.67
Hillingdon	2,214	7.44	2,472	8.30	<b>258</b>	<b>0.87</b>
<b>Greater London</b>	<b>53,456</b>	<b>6.16</b>	<b>64,729</b>	<b>7.46</b>	<b>11273</b>	<b>1.30</b>

The chart below shows the number of offences recorded in Harrow during each month for Period 1 in orange and Period 2 in purple.



The following chart shows the change in crime from Period 1 and Period 2 by each London Borough. Over half of boroughs experienced an increase in the rate of theft from a motor vehicle within Greater London. When compared to these areas Harrow's increase was relatively small.



## MOPAC 6: Theft from a Person

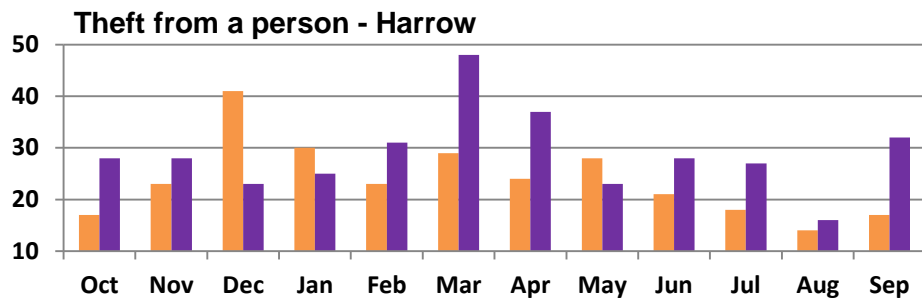
This includes theft from a person, pickpocket and other theft.

There was a total of 346 offences during Period 2, which is down from Period 1. This translates to a 0.25 rate increase or 61 additional offences in Period 2. The chart below also shows the number of offences in boroughs around Harrow and in Greater London.

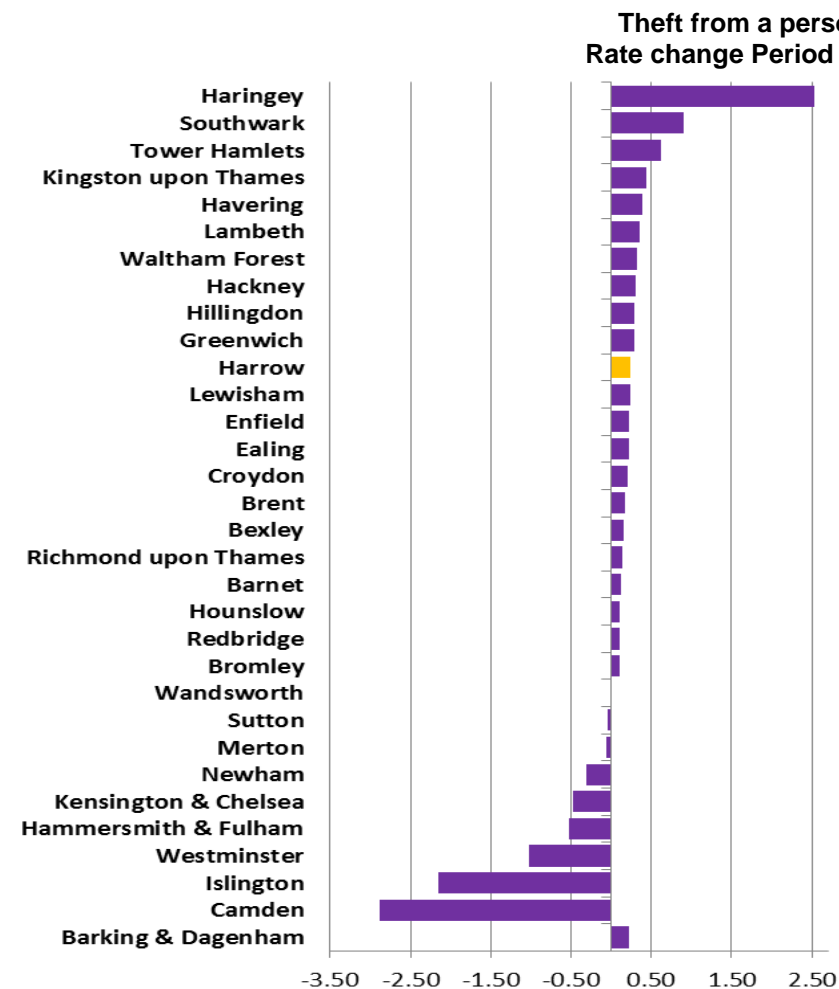


Theft from a person	Period 1 - Previous		Period 2 - Current		Offences Change	Rate Change
	Offences	Rate	Offences	Rate		
<b>Harrow</b>	<b>285</b>	<b>1.15</b>	<b>346</b>	<b>1.40</b>	<b>61</b>	<b>0.25</b>
Barnet	621	1.64	667	1.76	46	0.12
Brent	675	2.08	729	2.25	54	0.17
Ealing	547	1.59	624	1.82	77	0.22
Hillingdon	361	1.21	447	1.50	86	0.29
<b>Greater London</b>	<b>27,981</b>	<b>3.23</b>	<b>34,590</b>	<b>3.99</b>	<b>6609</b>	<b>0.76</b>

The chart below shows the number of offences recorded in Harrow during each month for Period 1 in orange and Period 2 in purple.



The following chart shows the change in crime from Period 1 and Period 2 by each London Borough. Harrow has shown an increase in the rate of theft from a person. Over half of boroughs experience an increase within Greater London.



## MOPAC 7: Criminal Damage

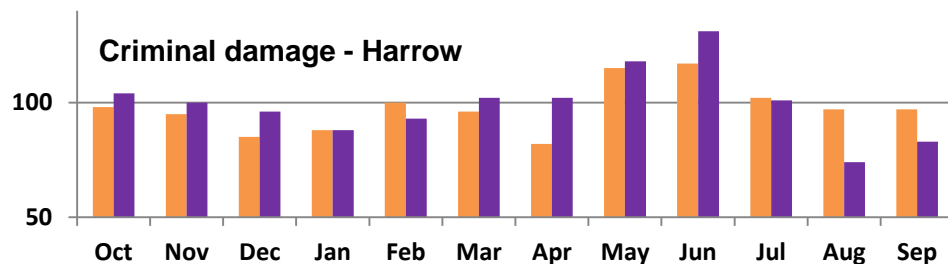
This includes offences such as damage to a dwelling, damage to other buildings, damage to a motor vehicle and other criminal damage offences.



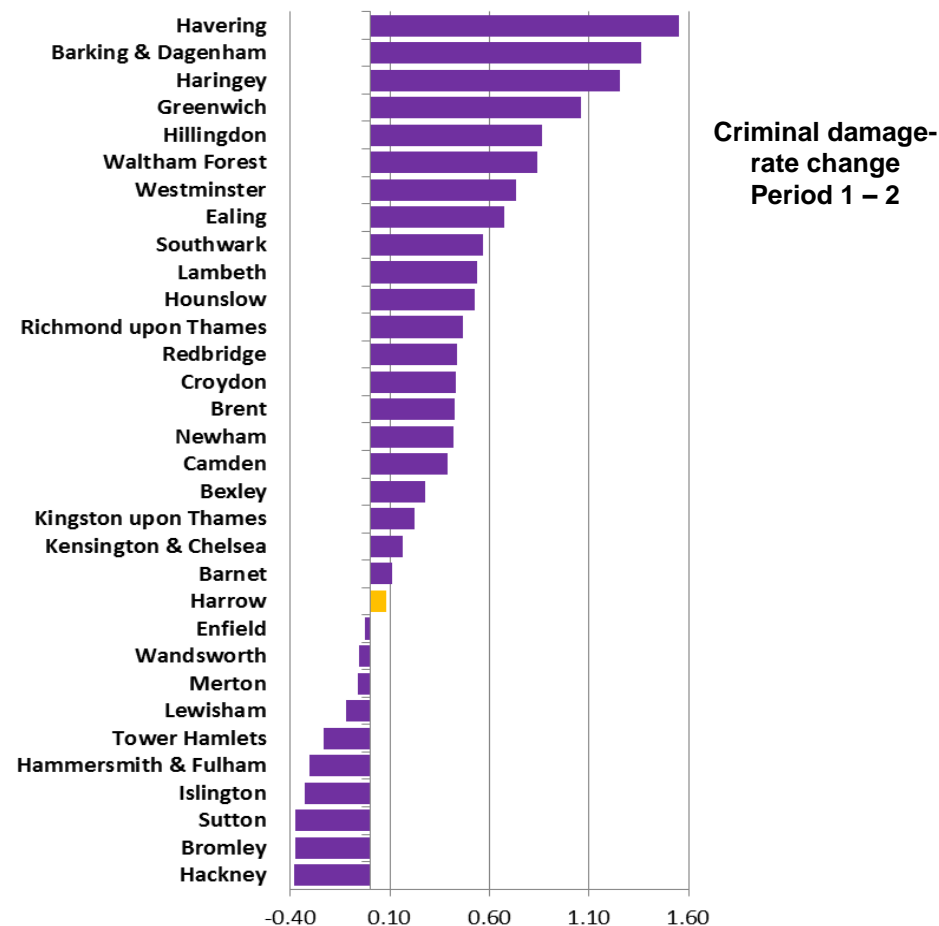
There was a total of 1,192 offences during Period 2, which is up from Period 1. This translates to a 0.08 rate increase or 20 additional offences in Period 2. The chart below also shows the number of offences in boroughs around Harrow and in Greater London.

Theft from a Motor Vehicle	Period 1 - Previous		Period 2 - Current		Offences Change	Rate Change
	Offences	Rate	Offences	Rate		
<b>Harrow</b>	<b>1,172</b>	<b>4.74</b>	<b>1,192</b>	<b>4.82</b>	<b>20</b>	<b>0.08</b>
Barnet	2,202	5.80	2,244	5.91	42	0.11
Brent	2,109	6.51	2,247	6.93	138	0.43
Ealing	2,402	7.00	2,633	7.68	231	0.67
Hillingdon	2,214	7.44	2,472	8.30	<b>258</b>	<b>0.87</b>
<b>Greater London</b>	<b>53,456</b>	<b>6.16</b>	<b>64,729</b>	<b>7.46</b>	<b>11273</b>	<b>1.30</b>

The chart below shows the number of offences recorded in Harrow during each month for Period 1 in orange and Period 2 in purple.



The following chart shows the change in crime from Period 1 and Period 2 by each London Borough. Harrow has shown a relatively small increase in the rate of criminal damage in Greater London. There is an upward trend across London as nearly all London Boroughs also experienced an increase.

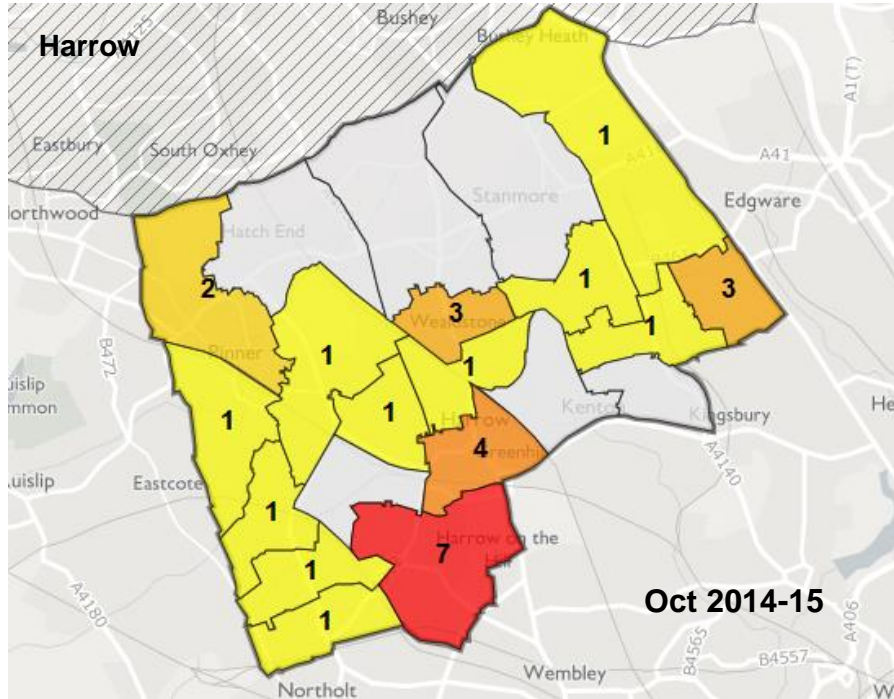


## Emergency Care Data Set

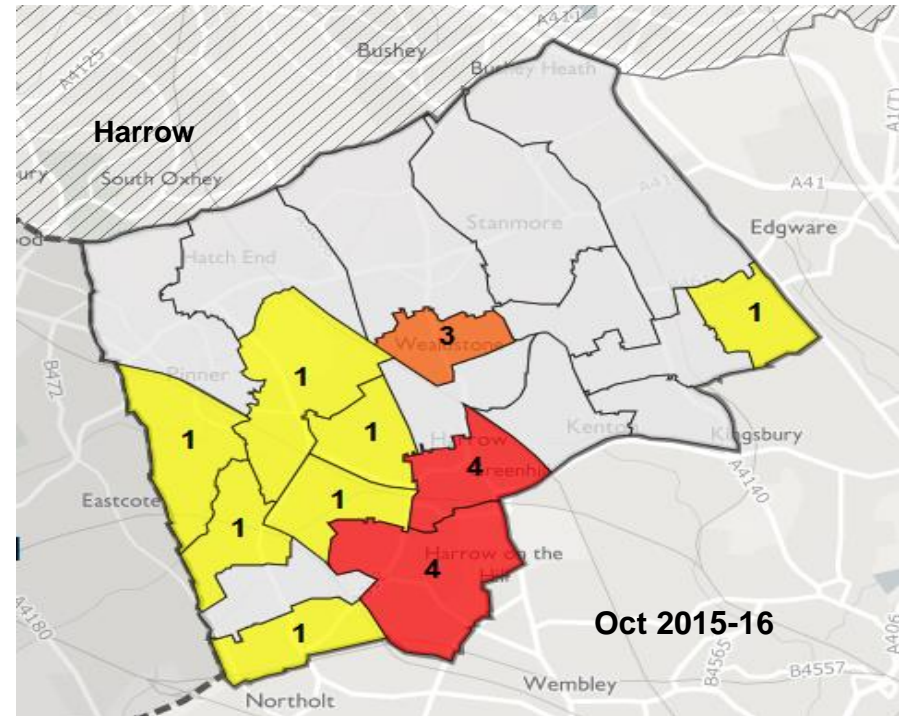
London's Information Sharing to Tackle Violence (ISTV) project estimates that currently only 23% of people injured and treated in hospital as a result of violent assaults are also recorded by police.

**62%  
Reduction**

The maps below illustrate Emergency Department (ED) attendances from across London, resulting from violent incidents taken place in Harrow. This data does not include ED attendances from outside London.



For period 1 there were a total 29 emergency attendances where the location of the incident given was a ward in Harrow. The majority of these incidents took place in and around the Borough's boundaries. The highest number of these incidents took place in Harrow on the Hill.



For period 2, a total 18 (11 fewer than period 1), emergency attendances took place where the location of the incident given was a ward in Harrow.

The majority of these incidents took place in the south west of the borough - with the highest numbers in Harrow on the Hill and Greenhill wards.

Data Source: Safe Stats portal (Information sharing to Tackle violence, ISTV), March 2017

## Anti-Social behaviour

### Anti-Social behaviour incidents- Local

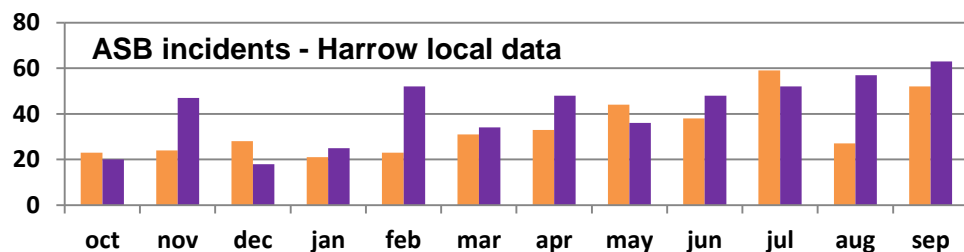
Anti-social behaviour covers a wide range of unacceptable activity that causes harm to an individual, to their community or to their environment. This could be an action by someone else that leaves a person feeling alarmed, harassed or distressed. It also includes fear of crime or concern for public safety, public disorder or public nuisance.

Examples of anti-social behaviour include nuisance, rowdy or inconsiderate neighbours, vandalism, graffiti and fly-posting, street drinking, environmental damage including littering, dumping of rubbish and abandonment of cars, prostitution related activity, begging and vagrancy, fireworks misuse, inconsiderate or inappropriate use of vehicles.

There were a total of 500 incidents recorded during Period 2, which is up from Period 1. This translates to a 0.37 rate increase or 97 additional incidents.



The chart below shows the number of incidents recorded in Harrow during each month for Period 1 in orange and Period 2 in purple.



Source: Harrow MVM data March: 2016

Ward	Sep-Oct 2014/15	Sep – Oct 2015/16	Incidents +/-
Belmont	11	25	14
Canons	27	28	1
Edgware	43	54	11
Greenhill	34	36	2
Harrow on the Hill	16	10	-6
Harrow Weald	20	23	3
Hatch End	6	8	2
Headstone North	8	9	1
Headstone South	13	17	4
Kenton East	21	20	-1
Kenton West	9	15	6
Marlborough	18	29	11
Pinner	7	13	6
Pinner South	8	3	-5
Queensbury	27	49	22
Rayners Lane	30	16	-14
Roxbourne	30	25	-5
Roxeth	26	45	19
Stanmore Park	17	38	21
Wealdstone	23	21	-2
West Harrow	9	16	7
<b>Grand Total</b>	<b>403</b>	<b>500</b>	<b>97</b>

## Anti-Social behaviour incidents- MET

There were a total of 4752 incidents recorded during Period 2, which is up from Period 1. This translates to a 0.3 rate decrease or 75 fewer incidents.

ASB	Period 1 - Previous		Period 2 - Current		Offences Change	Rate Change
	Offences	Rate	Offences	Rate		
Harrow	4827	19.53	4752	19.23	-75	-0.3
Barnet	8074	21.26	8242	21.71	168	0.44
Brent	8242	25.44	9234	28.50	992	3.06
Ealing	9613	28.02	9981	29.09	368	1.07
Hillingdon	8188	27.50	8949	30.06	761	2.56

Source: Police street crime data set,  
<https://data.police.uk/docs/method/crime-street/> March 2016

The chart below shows the number of incidents recorded in Harrow during each month for Period 1 in orange and Period 2 in purple. The chart shows that for period 2 the peak months were August, September and July.

