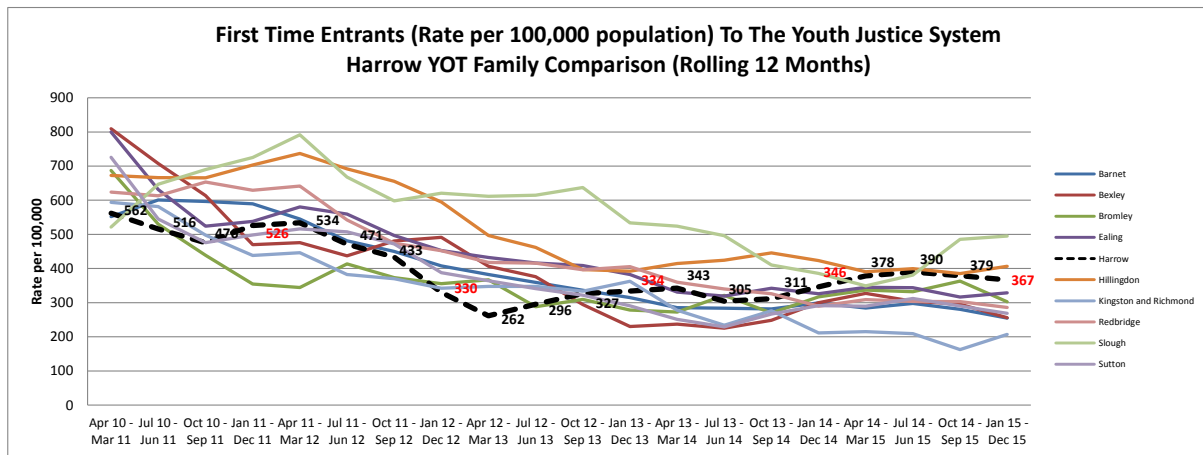
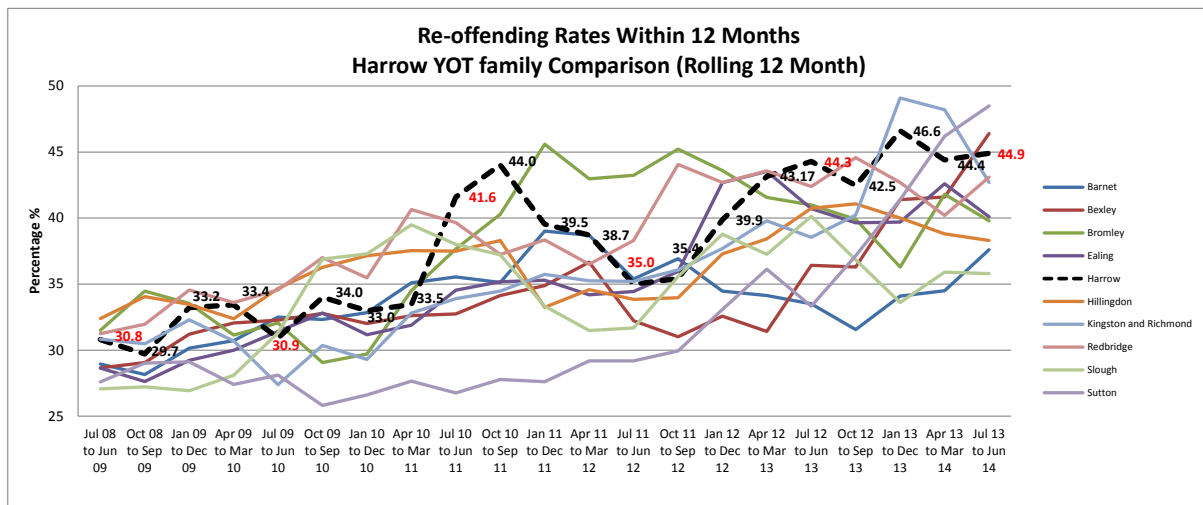


## Appendix 1 – Performance Indicators for YOT

### YJB Outcome Indicators (Extracted from latest YOT Management Board Report)

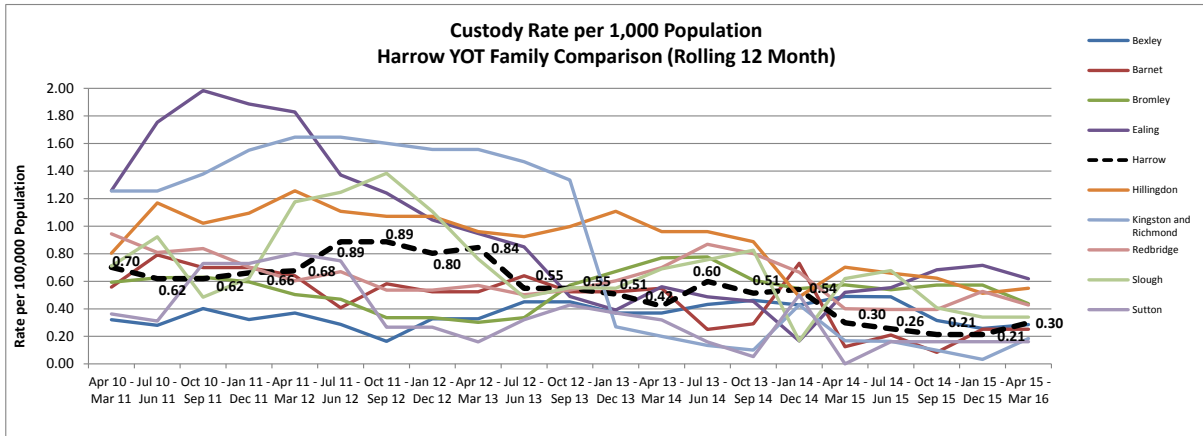


Compared to the YOT family, Harrow's latest FTE rate (Jan 2015 - Dec 2015) of 379 is the 3rd highest. The current YOT family average is 307. New offending rates in Harrow decreased between 2010 and 2013 and then shows a flattening off small increase to the most recent available data at Dec 2015.



Note time lag on this data – date is of original offence, plus data of whether offended within 12 months is verified with Police National Computer. Latest data shows reoffences in year after original offence between July 2013 and June 2014. Note also that the rate is influenced by changes in size of 'offending cohort' which has decreased significantly.

Harrow's most recent re-offending rate of 44.9% relates to 66 re-offenders from a cohort of 147. Over the period shown, the number of reoffenders within 12 months has reduced from 109 to 66 – so a lower number of reoffences, but a higher rate, with a smaller hard core of offenders.



Overall, Harrow's current position of 0.30 (Apr 15 - Mar 16) is in line with the previous years figure of 0.30 (Jan 14 - Dec 14). Harrow is currently the 4th lowest of the 10 YOT's, it is also lower than YOT Family averages (0.36), London averages (0.66) and National averages (0.37).

### YOT operational indicators (note these are local indicators, no comparator data available)

