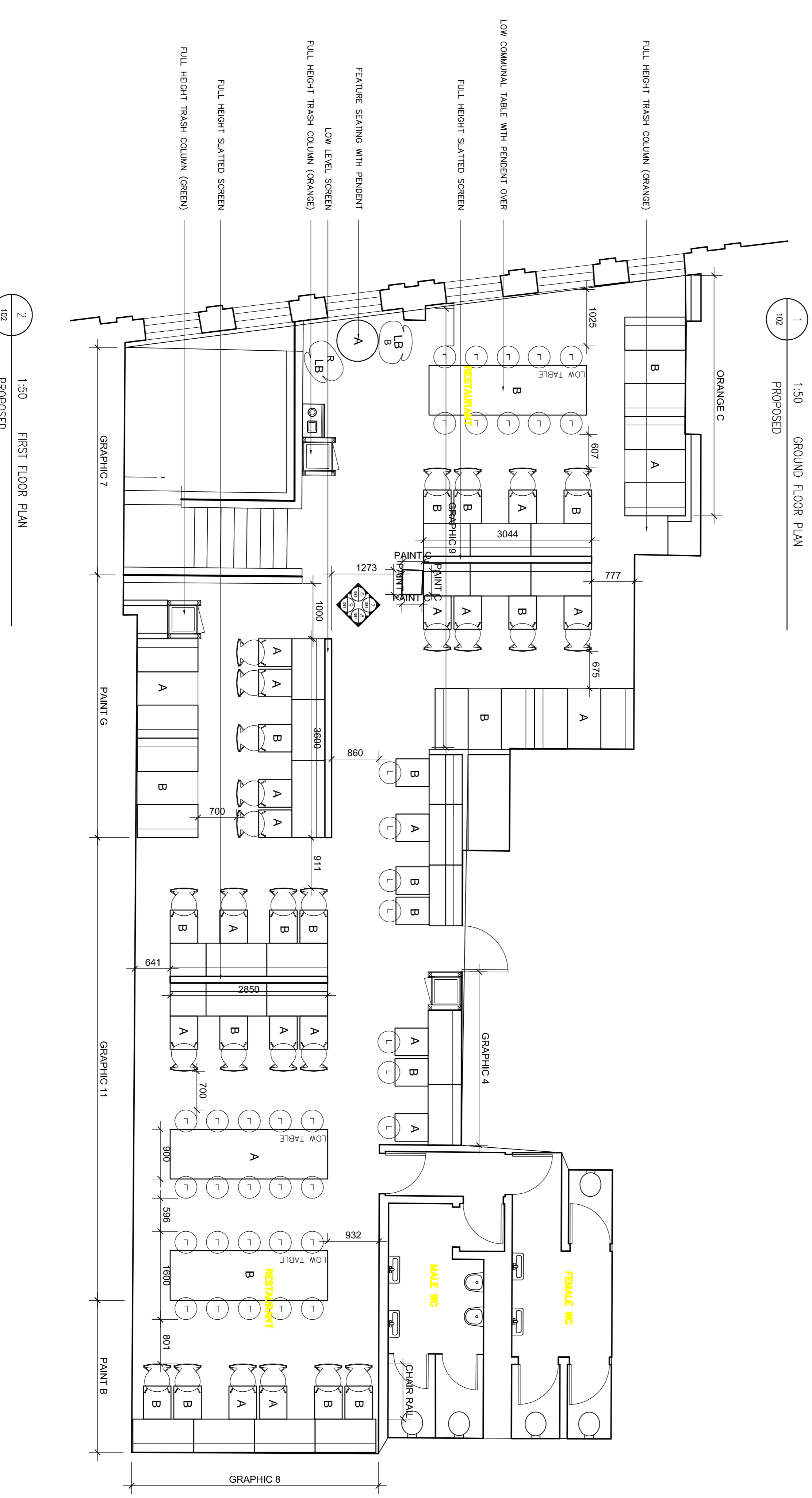


EXISTING SEAT COUNT	
GROUND FLOOR	51 No.
FIRST FLOOR	104 No.
TOTAL	155 No.

PROPOSED SEAT COUNT	
GROUND FLOOR	45 No.
FIRST FLOOR	126 No.
TOTAL	171 No.



2 1:50 PROPOSED FIRST FLOOR PLAN

Notes:  
 Drawing to be read in conjunction with all other drawings, including standard details.  
 Any discrepancies to be reported to McDonald's prior to works commencing.  
 All existing furniture to be removed, unless noted. Floor to be patch repaired following removal of old furniture, including skirting.

- Furniture**  
 To be read in conjunction with furniture schedule.  
 All table pedestals to be fixed.
- New All height 'Trestle' table - refer to furniture schedule for depth
  - New Barista Seat - upholstered Special dimensions: 780mm from site prior to manufacture
  - New 750mm<sup>2</sup> Table on single pedestal - Pedestal height as standard table - steel pedestal
  - New 600 x 500 mm Table on single 750mm<sup>2</sup> pedestal
  - New High / Low Table - Napkins / Straw Dispenser - LRF/Almond Oak RSH
  - BIG BROTHER - Choice of 3Mx5 Finisher - Green: Col 07245 and 50053 - Red: Col 07478 and 50053
  - Choice of 2Mx4 Finisher, to be randomly distributed in order of quantities:
    - Jade Chair 750/105 Black Blue
    - Jade Chair 750/105 Dark Blue
    - Jade Chair 770/115 Dark Grey
    - Jade Chair 110/115 Pearl
    - Jade Chair 110/115 Steel
    - Jade Chair 200/205 Ivory
    - Jade Chair 200/205 Navy
    - Jade Chair 200/205 Orange
    - Jade Chair 200/205 Turquoise
    - Jade Chair 240/245 Turquoise
    - Jade Chair 240/245 Navy
    - Jade Chair 240/245 Dark Blue
    - Jade Chair 240/245 Light Blue
    - Jade Chair 240/245 Yellow
    - Jade Chair 520/525 Orange
    - Jade Chair 520/525 Magenta
    - Jade Chair 520/525 Dark Red
    - Jade Chair 520/525 Dark Red
  - LITTLE BROTHER - Choice of 3Mx5 Finisher:
    - Green: Col 07245 and 50053
    - Red: Col 07478 and 50053
    - High Stool 1320 Dark Brown
    - Low Stool
    - Vascon 1320 Dark Brown
- Furniture Materials**  
 A Laminate Finish Ref: LRF/Almond Oak RSH  
 B Corian Finish Ref: Glacier White

Reference	Colour	Dulux Reference
Paint A	Add Green	72 YY 47743
Paint B	Khaki Green (A)	70 YY 094175
Paint C	Orange	60 YR 23850
Paint D	Brown	60 YR 13271
Paint E	Grey Green	40 Y1 207153
Paint F	Dark Brown	70 YR 07093
Paint G	Brown	60 YR 087186
Shopfront	Khaki Green (B)	90 YY 07093

PROPOSED DEVELOPER AT  
 351/353 STATION ROAD,  
 HERRING HAY ZAW

McDonald's Restaurants Ltd  
 150, 041 13,03,07

0047-101 04

17 BROADWAY, LONDON E16 1EJ  
 TEL: 020 7586 6000  
 FAX: 020 7586 6001