

H.M. LAND REGISTRY GENERAL MAP

GREATER LONDON
MIDDLESEX

SHEET X. 8. SECTION BN

Scale $\frac{1}{750}$ Enlarged from $\frac{1}{2500}$

BOROUGH OF HARROW
~~HARROW PARISH~~



Filed Plan of Title No. **M X 103090**

This title is dealt with by Land Registry, Harrow Office.

This is a copy of the title plan on 25 APR 2005 at 10:46:37. This copy does not take account of any application made after that time even if still pending in the Land Registry when this copy was issued.

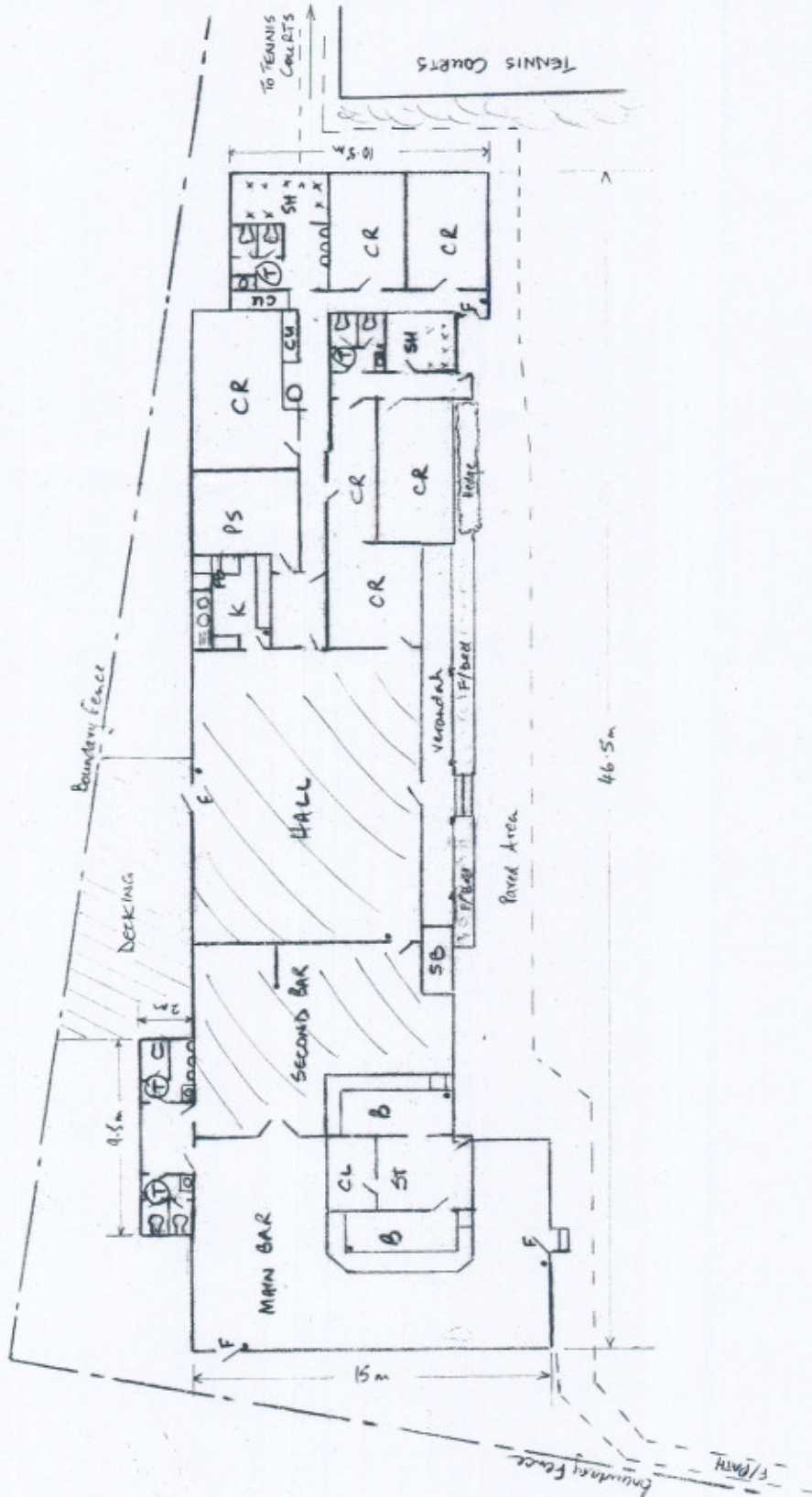
This copy is not an 'Official Copy' of the title plan. An official copy of the title plan is admissible in evidence in a court to the same extent as the original. A person is entitled to be indemnified by the registrar if he suffers loss by reason of a mistake in an official copy. If you want to obtain an official copy, the Land Registry web site explains how to do this.

The Land Registry endeavours to maintain high quality and scale accuracy of title plan images. The quality and accuracy of any print will depend on your printer, your computer and its print settings. When printed, the copy plan will not necessarily be to the scale shown on the original.

© Crown Copyright. Produced by HMLR. Further reproduction in whole or in part is prohibited without the prior written permission of Ordnance Survey. Licence Number GD272728.

KEY to SYMBOLS

- B = Bar Seating area
- CL = Cellar (Cool Storage)
- ST = Storage for Bar, etc
- SB = Score Box
- CR = Changing Room
- K = Kitchen
- PS = Playschool Storage room
- CU = Cupboard (spots)
- SH = Showers
- Ⓣ = Toilets
- = Fire extinguisher
- F = Fire Exit
- FB = Fire Blanket



KENTON SPORTS CLUB

KENTON PARK ROAD, KENTON, HARROW, HA 3 8UB.

Approx. Scale 1:200